

# Community Wildfire Safety Program

Visit [pge.com/wildfiresafety](https://pge.com/wildfiresafety) for more information



With the increased wildfire threat our state faces, PG&E is enhancing and expanding our efforts to reduce wildfire risks and keep our customers and communities safe.



**50%** of PG&E's service territory is in high fire-threat areas

High temperatures, extreme dryness and record-high winds have created conditions in our state where any spark at the wrong time and place can lead to a major wildfire.

Our Community Wildfire Safety Program includes short-, medium- and long-term plans to make our system safer. Steps we are taking this year include:



## Reducing Wildfire Risks

**Hardening our infrastructure** with stronger poles, covered power lines and targeted undergrounding

**Meeting and exceeding** state vegetation and fire safety standards

**Speeding up inspections** of our electric infrastructure in high fire-risk areas

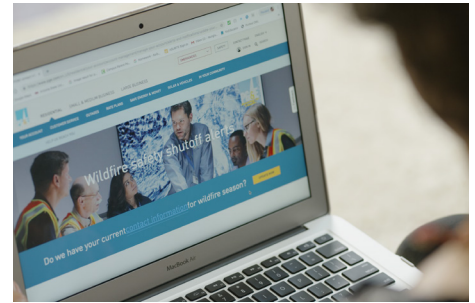


## Improving Situational Awareness

**Installing additional weather stations** to more precisely predict the need for and end of Public Safety Power Shutoff (PSPS) events

**Installing more high-definition cameras** in high fire-threat areas to identify potential wildfires

**Coordinating prevention and response efforts** by monitoring wildfire risks in real time from our 24/7 Wildfire Safety Operations Center



## Reducing the Impact of PSPS Events

**Reducing the number of customers affected** by a PSPS event by **nearly one-third** as compared to last year

**Cutting restoration times in half** compared to 2019 so that we restore power **within 12 daylight hours** after severe weather has passed

**Providing better information and resources to customers and communities** before, during and after a PSPS event

## Do you have a plan to stay safe during wildfires?

The threat of extreme weather and wildfires continues to grow. Below are some steps to help keep you, your family and your home safe.



**Prepare & practice** a plan to make sure everyone in your home knows what to do during an emergency.



**Update your contact information** by visiting [pge.com/mywildfirealerts](https://pge.com/mywildfirealerts).



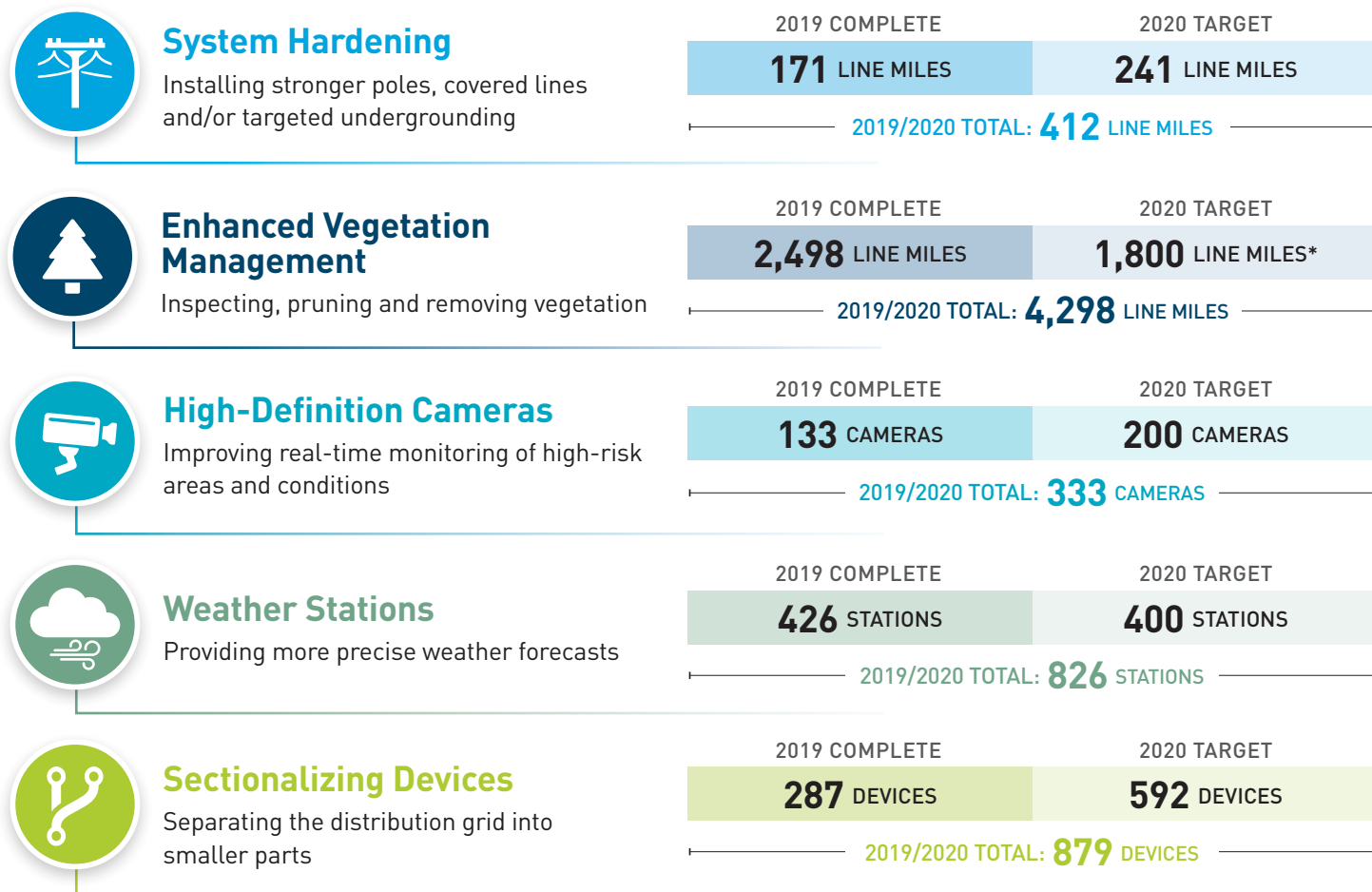
**Maintain defensible space** around your home by regularly trimming bushes and trees. Visit [readyforwildfire.org](https://readyforwildfire.org) for more tips and information.



**Build or restock** your emergency kit with supplies to last a week and plan for medications that need refrigeration or medical devices that require power.

## COMMUNITY WILDFIRE SAFETY PROGRAM BY THE NUMBERS

PG&E's 2019 advancements and 2020 targets for additional enhancements



\*Does not include expanded vegetation work near lower voltage transmission lines intended to both reduce wildfire risk and the footprint of future PSPS events.

### Learn More

For the latest on PG&E's wildfire safety efforts, please visit [pge.com/wildfiresafety](https://pge.com/wildfiresafety).  
 To learn more about how you and your family can prepare for a PSPS event, please visit [safetyactioncenter.pge.com](https://safetyactioncenter.pge.com).