

# DISTRICTING TUD

Draft Maps

*March, 2022*

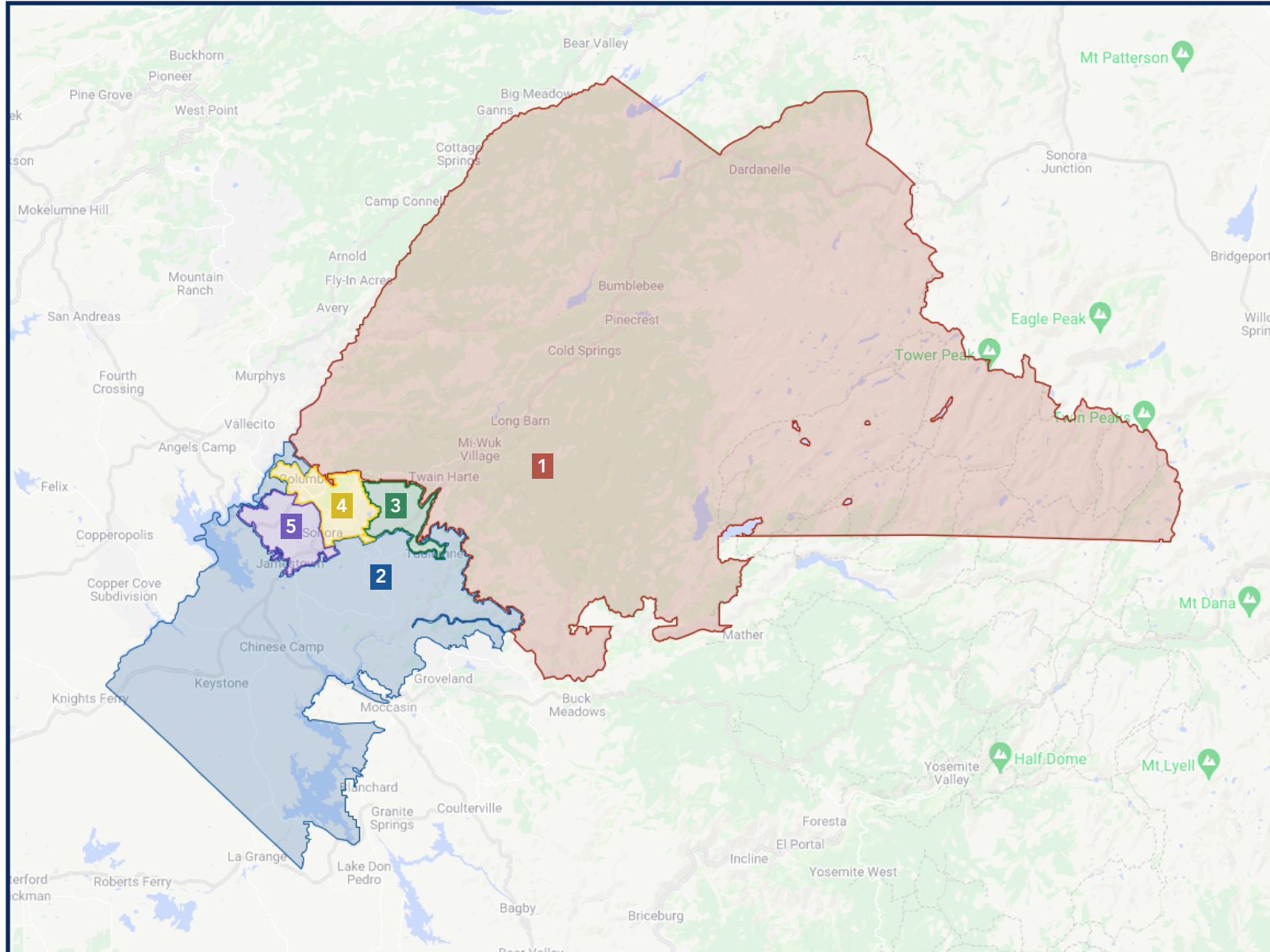
# DISTRICTING TUD DRAFT I

	DISTRICT 1	DISTRICT 2	DISTRICT 3	DISTRICT 4	DISTRICT 5
2020 Census Count*	9,750	9,146	9,727	9,787	9,649
Deviation #	138	-466	115	175	37
Deviation %	1.4%	-4.8%	1.2%	1.8%	0.4%
2010 Census Count	9,625	13,063	9,814	8,897	9,308
2019 CVAP*	7,728	7,426	7,936	7,229	7,289
2010 CVAP	7,565	11,948	7,408	7,058	7,401



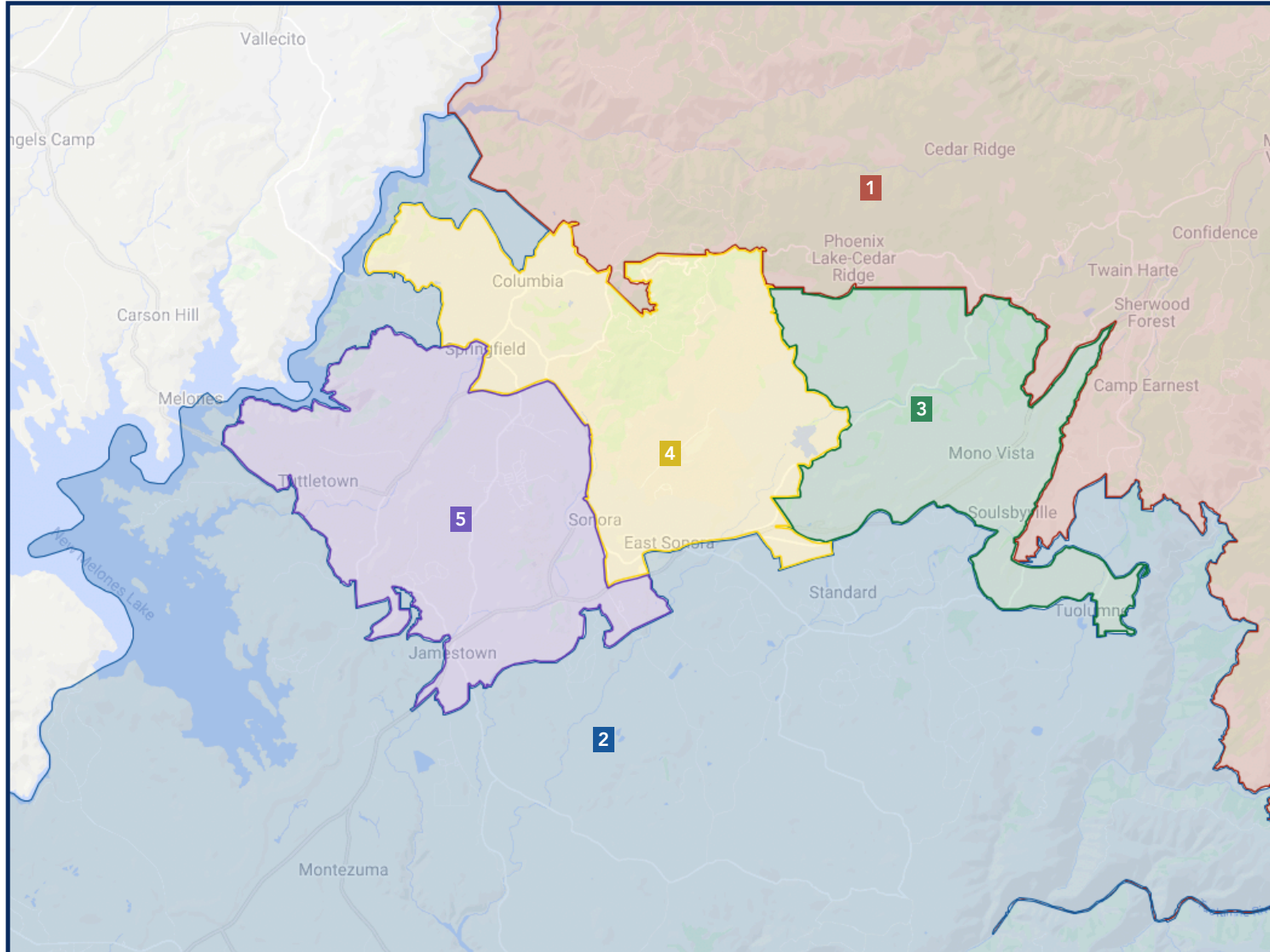
*\*Adjusted for prisoner reallocation*

# DISTRICTING TUD DRAFT I



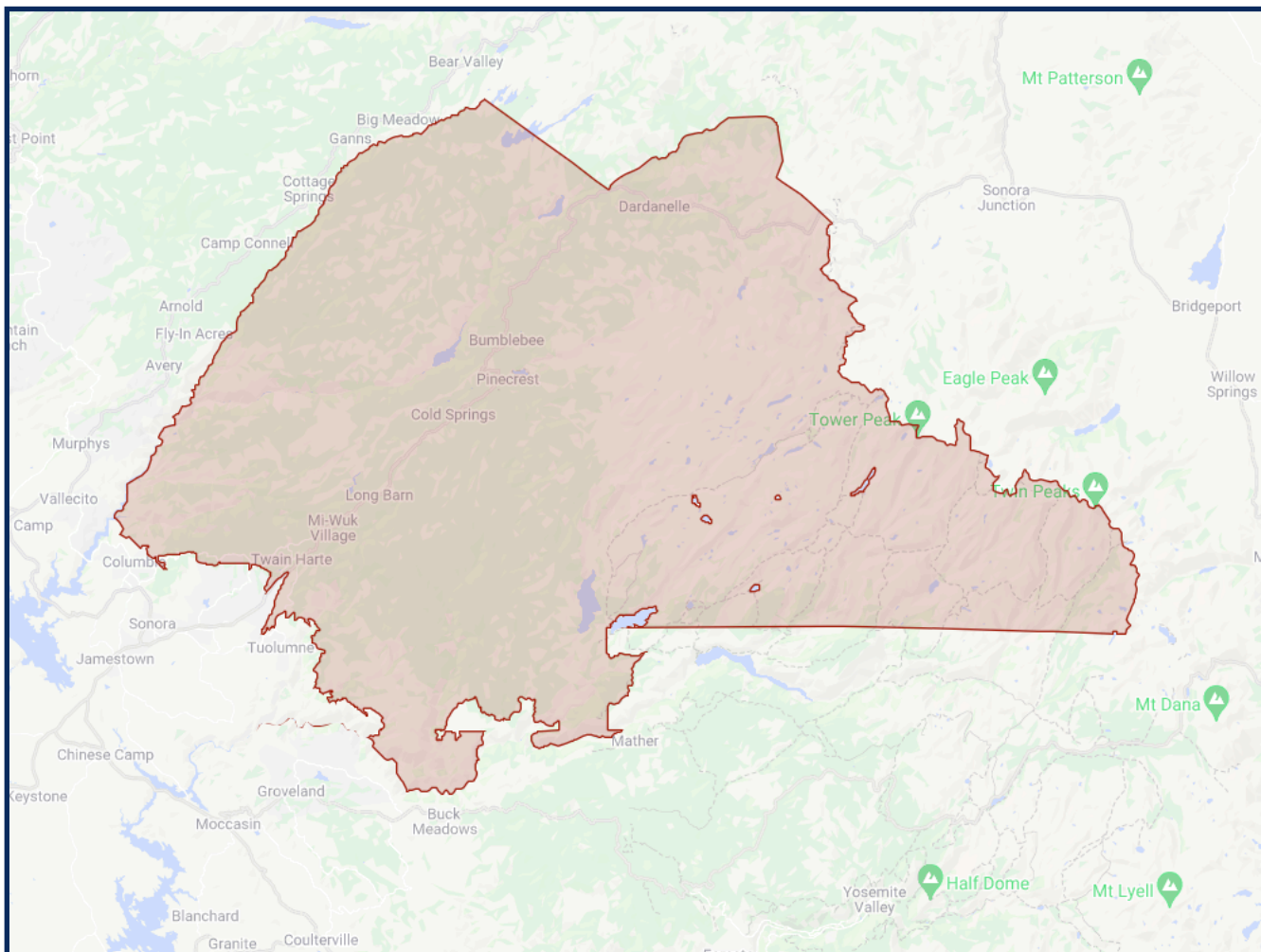
*\*Adjusted for prisoner reallocation*

# DISTRICTING TUD DRAFT I



# DISTRICTING TUD DRAFT I

## DISTRICT 1



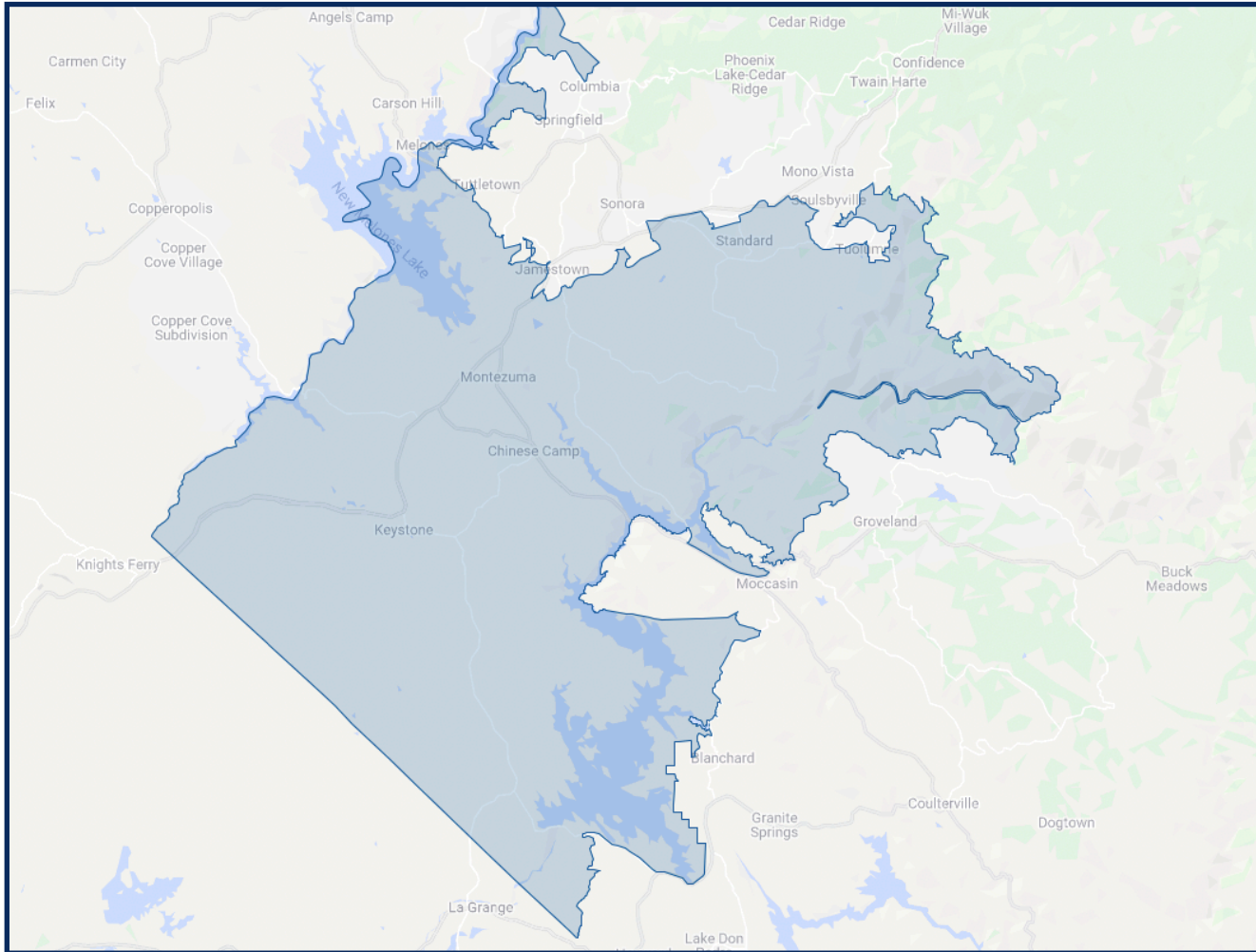
	2020 Count*	2019 CVAP*
Total	9,750	7,728
White	82.62%	88.83%
Black	0.13%	0.01%
Asian	0.82%	0.08%
Hispanic	8.85%	8.06%
Native American	0.87%	0.71%



\*Adjusted for prisoner reallocation

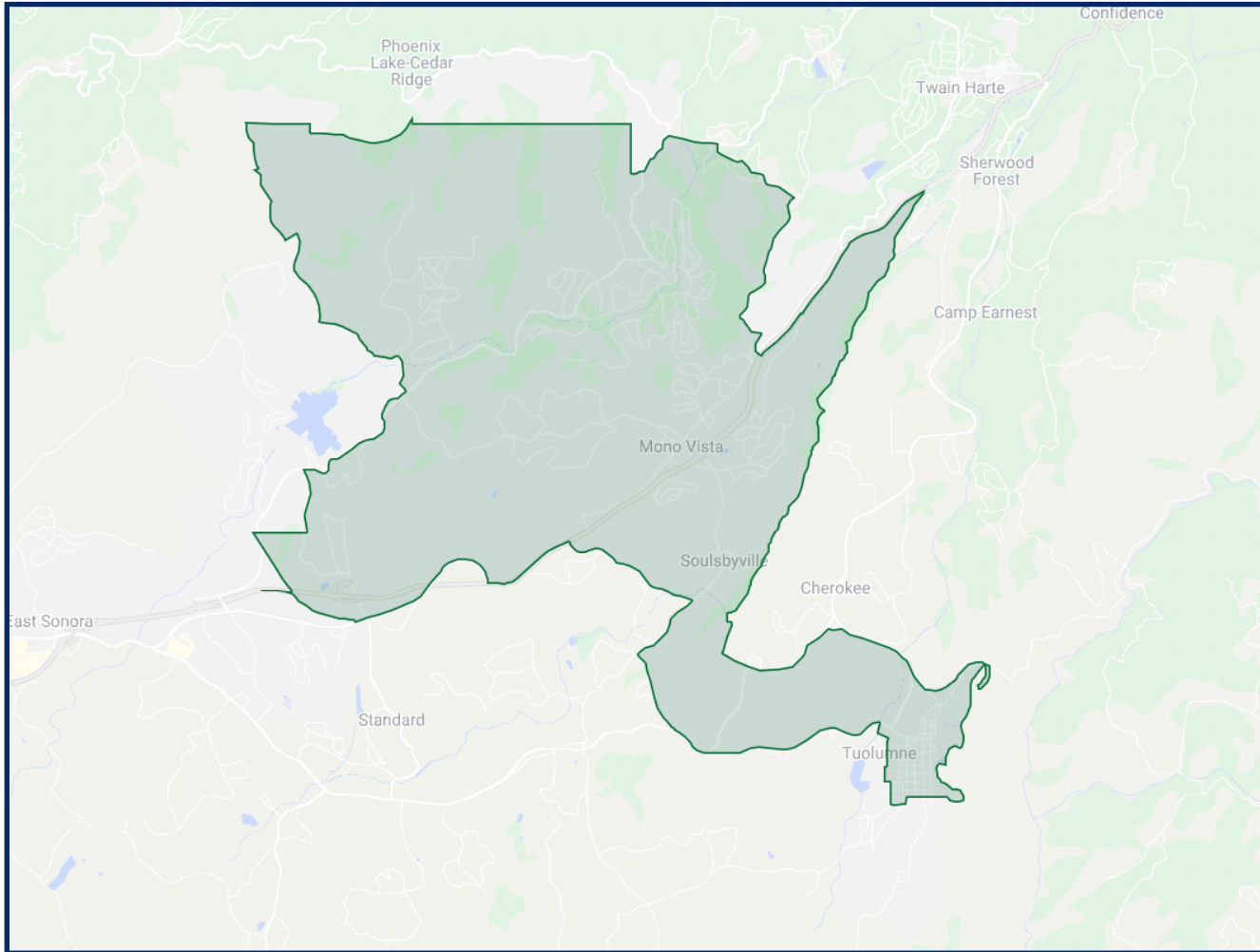
# DISTRICTING TUD DRAFT I

## DISTRICT 2



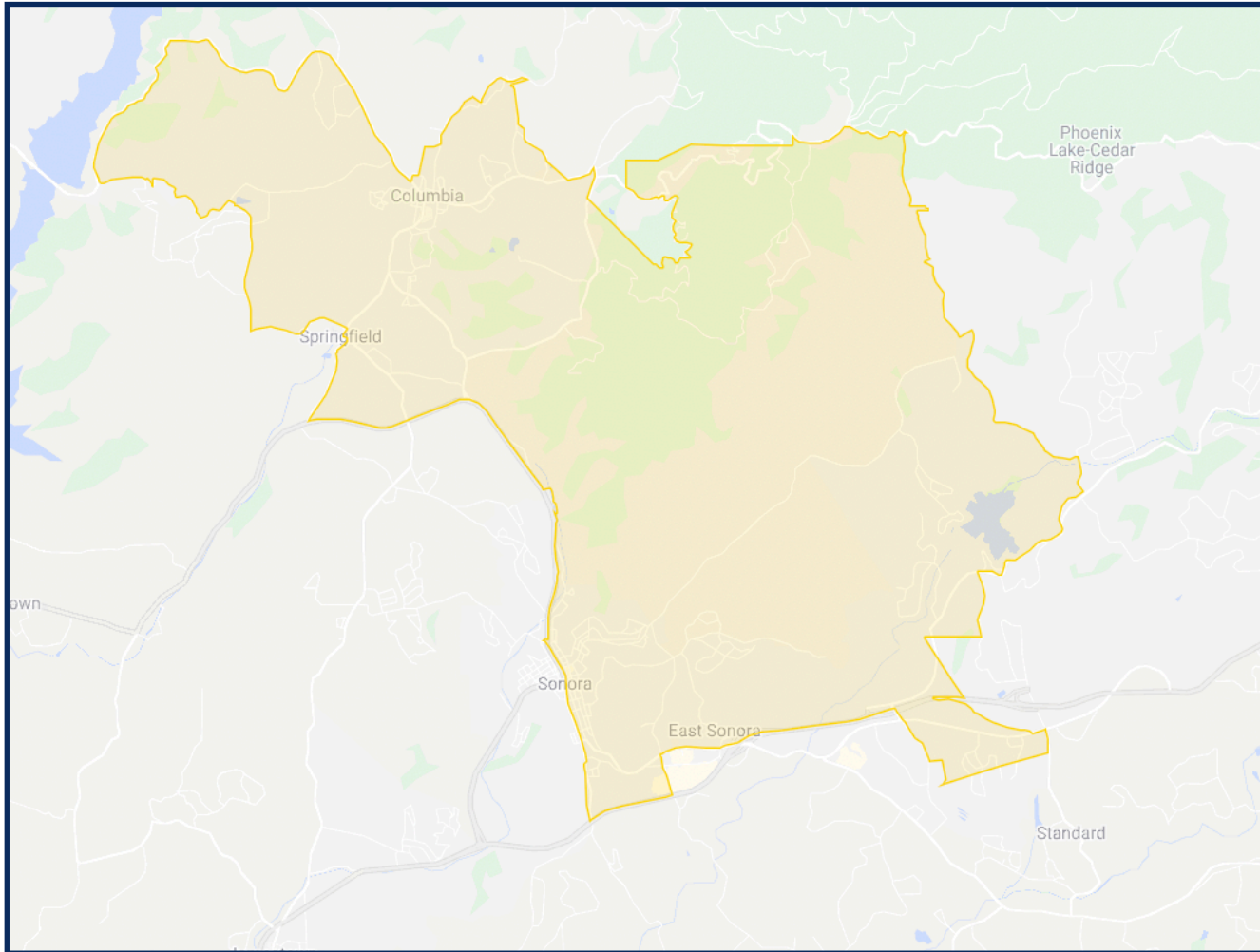
	2020 Count*	2019 CVAP*
Total	9,146	7,426
White	78.79%	86.68%
Black	0.35%	0.78%
Asian	1.01%	0.46%
Hispanic	11.21%	8.81%
Native American	2.51%	2.32%

## DISTRICT 3



	2020 Count*	2019 CVAP*
Total	9,727	7,936
White	77.40%	83.83%
Black	0.37%	0.04%
Asian	0.73%	0.28%
Hispanic	12.31%	11.19%
Native American	1.56%	1.32%

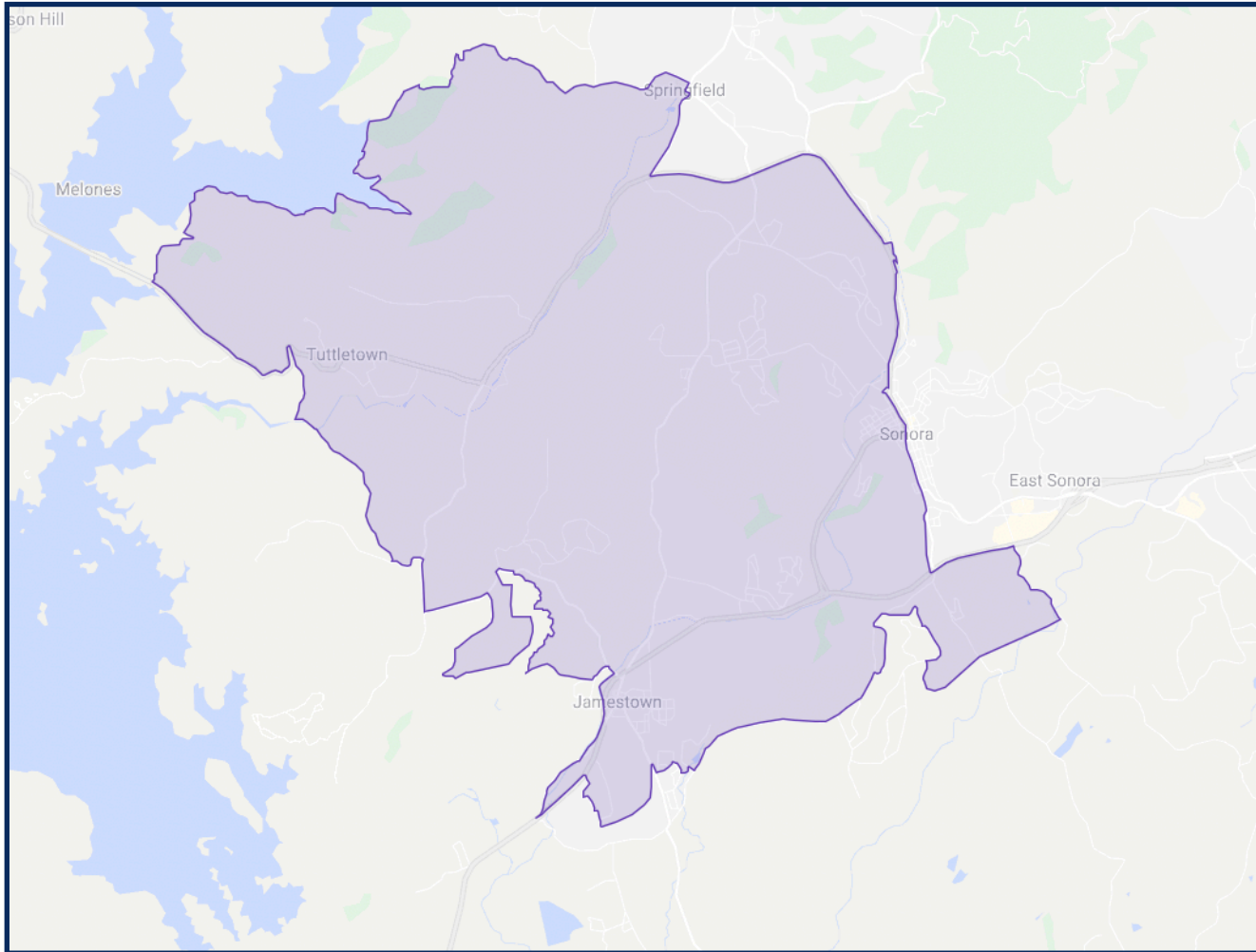
## DISTRICT 4



	2020 Count*	2019 CVAP*
Total	9,787	7,229
White	77.99%	86.14%
Black	0.48%	0.07%
Asian	2.43%	1.95%
Hispanic	11.19%	8.38%
Native American	1.25%	1.77%



## DISTRICT 5



	2020 Count*	2019 CVAP*
Total	9,649	7,289
White	76.42%	84.48%
Black	0.51%	0.80%
Asian	1.77%	0.10%
Hispanic	12.88%	11.58%
Native American	1.48%	1.15%

# DISTRICTING TUD

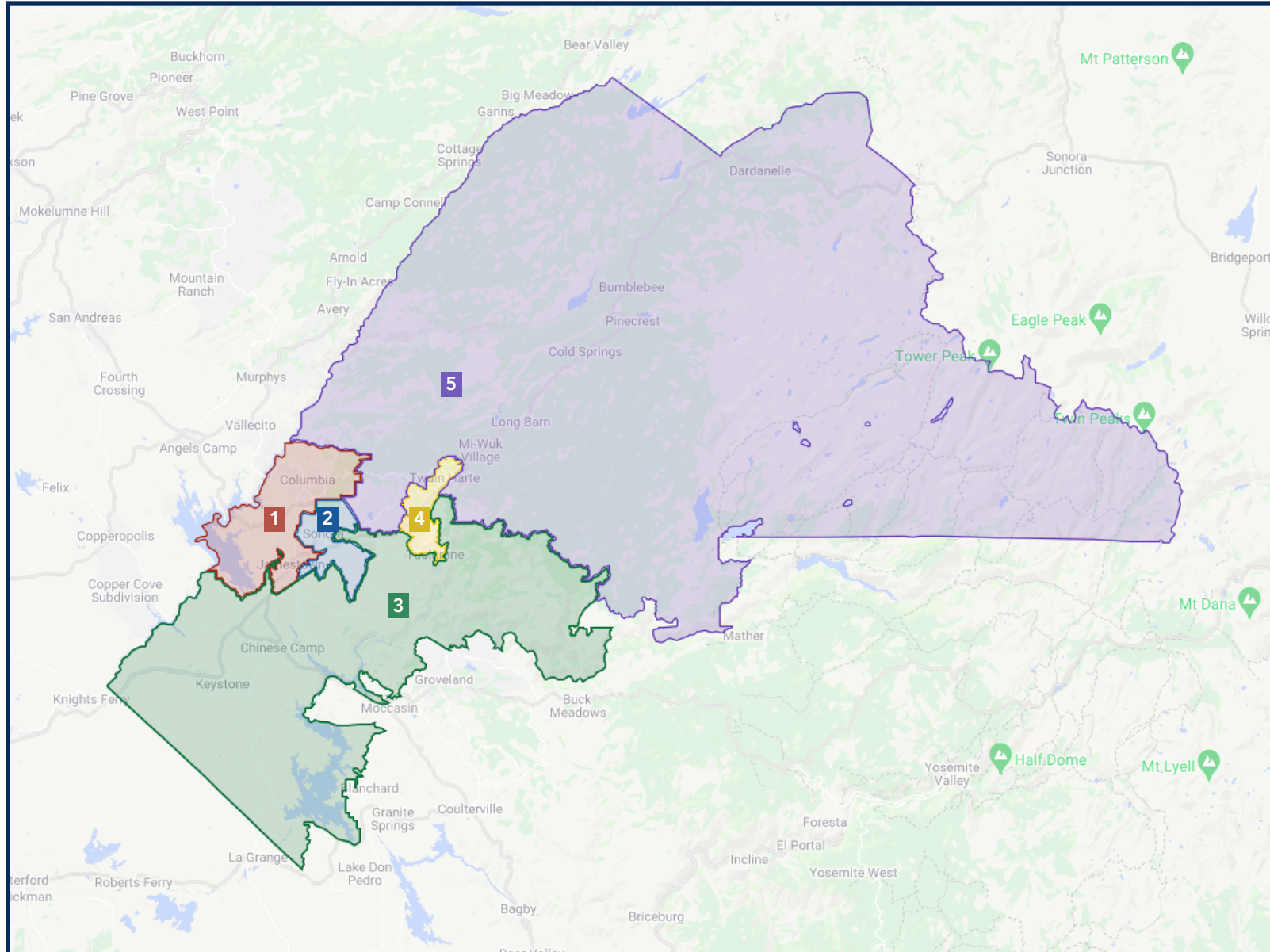
## DRAFT 2

	DISTRICT 1	DISTRICT 2	DISTRICT 3	DISTRICT 4	DISTRICT 5
2020 Census Count*	9,660	9,733	9,234	9,724	9,708
Deviation #	48	121	-378	112	96
Deviation %	0.5%	1.3%	-3.9%	1.2%	1.0%
2010 Census Count	9,280	9,138	13,090	9,442	9,757
2019 CVAP*	7,299	7,252	7,487	7,704	7,866
2010 CVAP	7,436	7,770	11,427	7,098	7,649



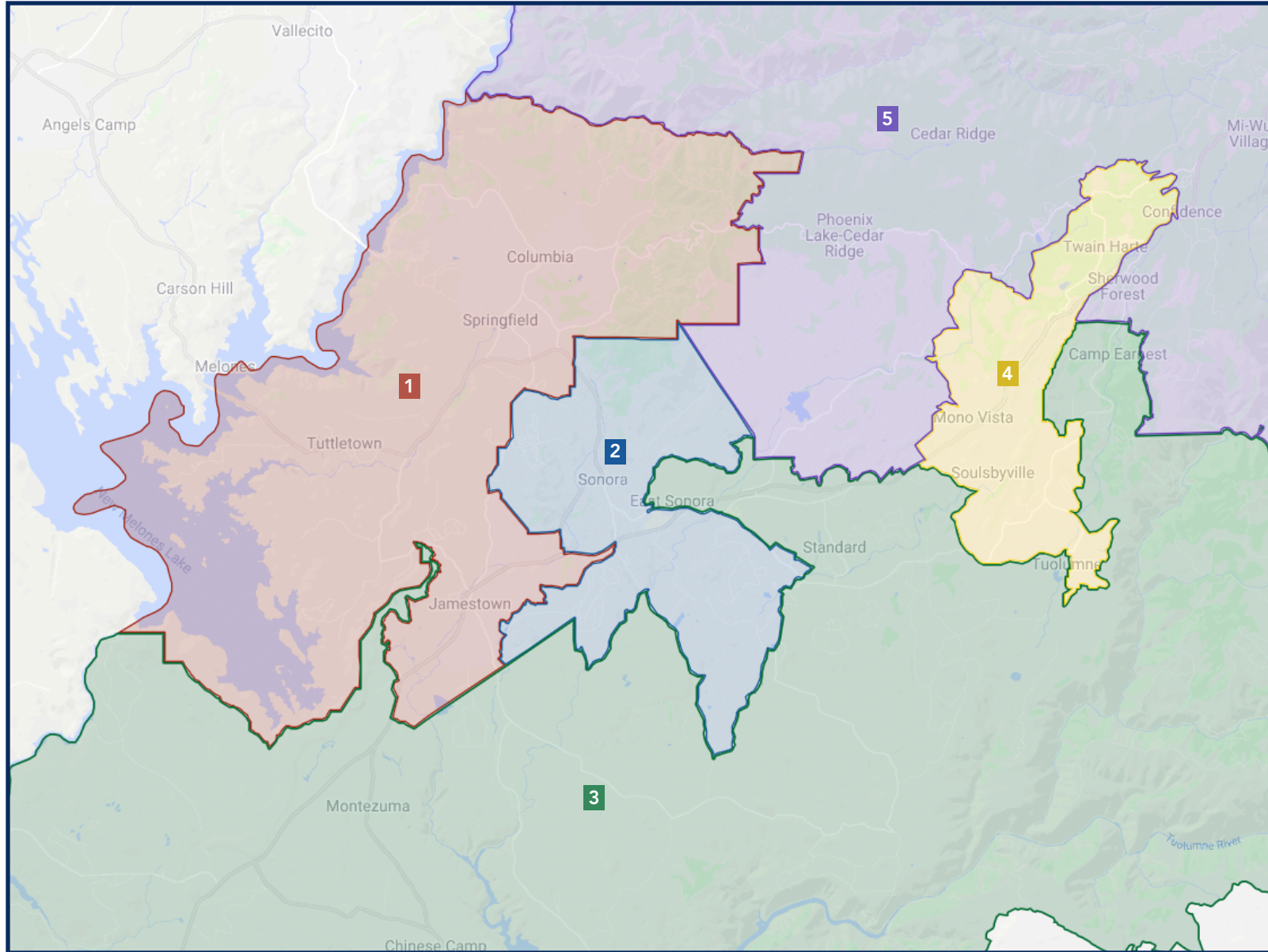
*\*Adjusted for prisoner reallocation*

# DISTRICTING TUD DRAFT 2



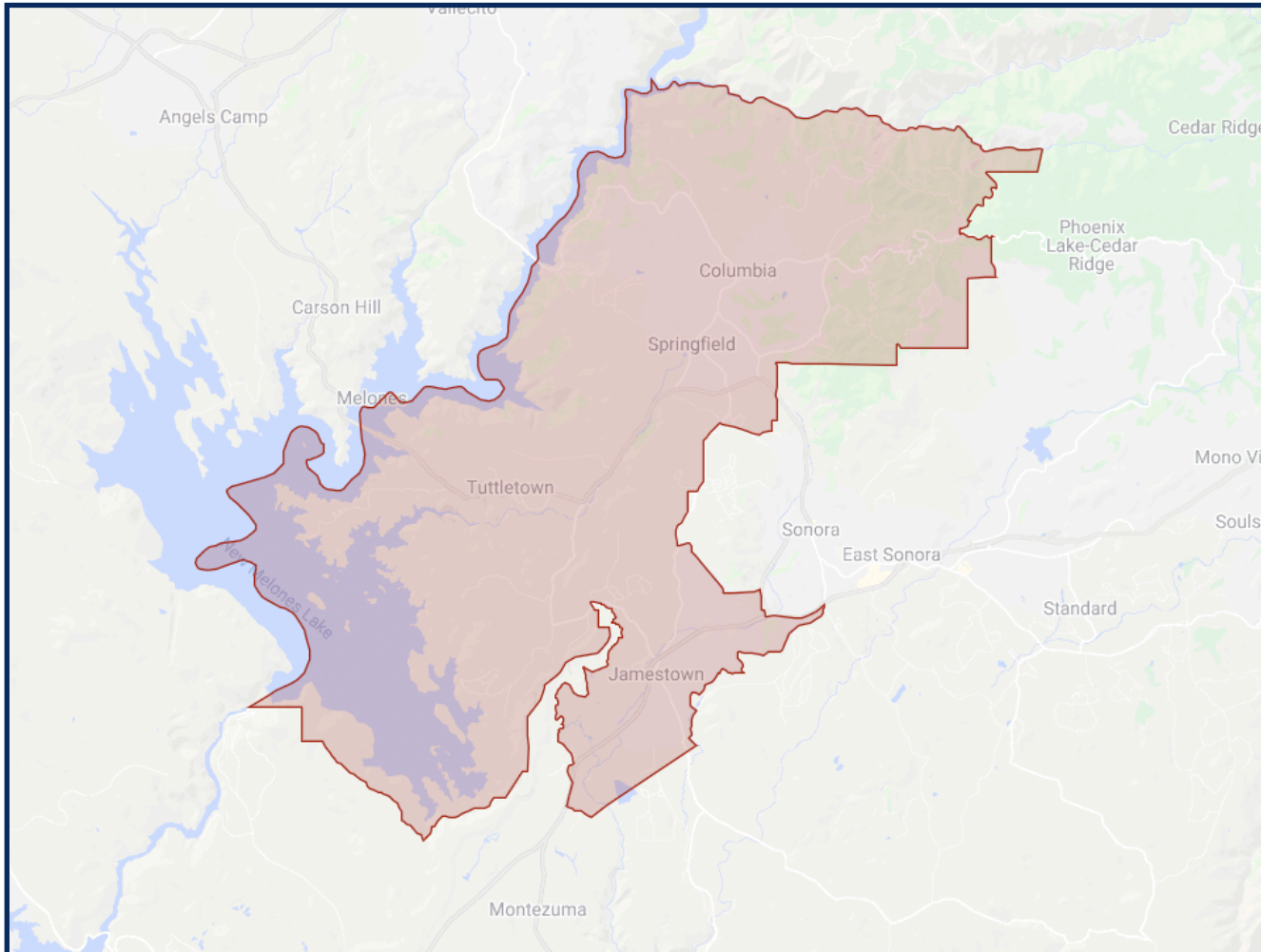
*\*Adjusted for prisoner reallocation*

# DISTRICTING TUD DRAFT 2



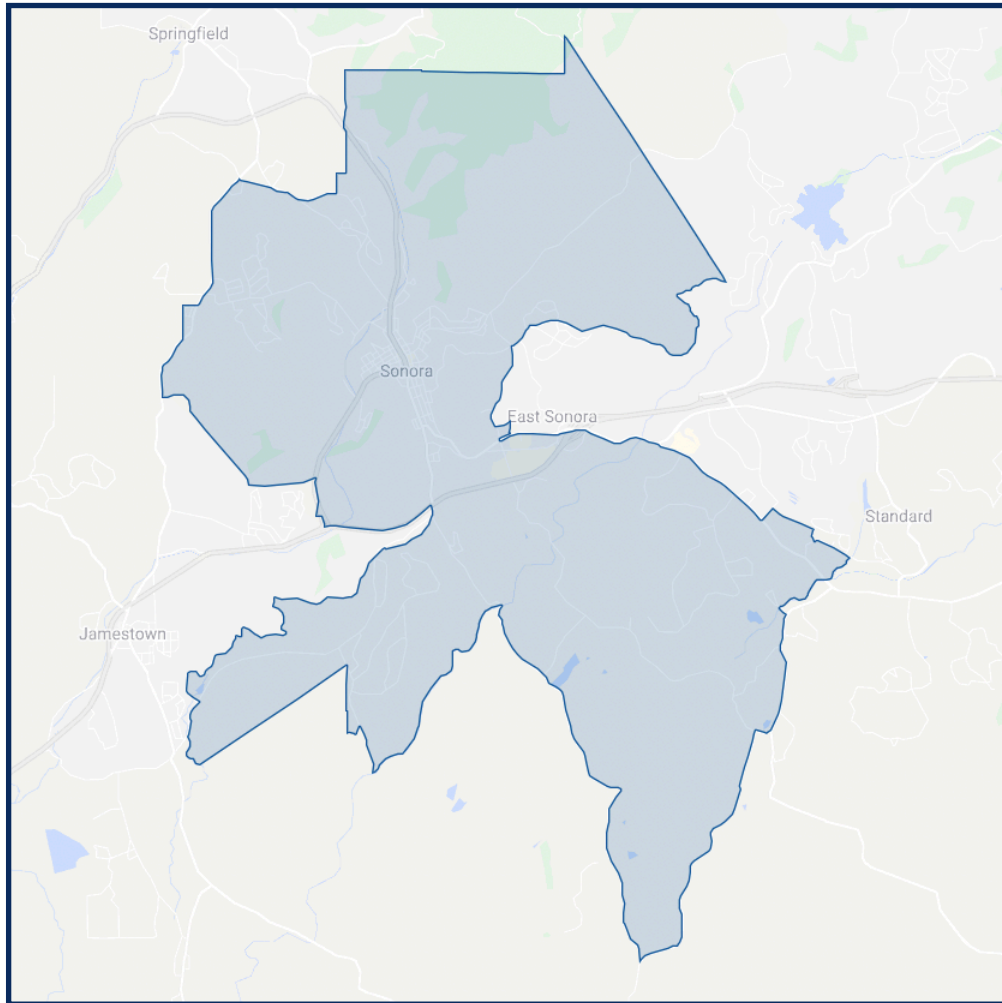
# DISTRICTING TUD DRAFT 2

## DISTRICT 1



	2020 Count*	2019 CVAP*
Total	9,660	7,299
White	76.89%	86.00%
Black	0.58%	0.01%
Asian	1.39%	0.15%
Hispanic	12.37%	9.95%
Native American	1.68%	2.07%

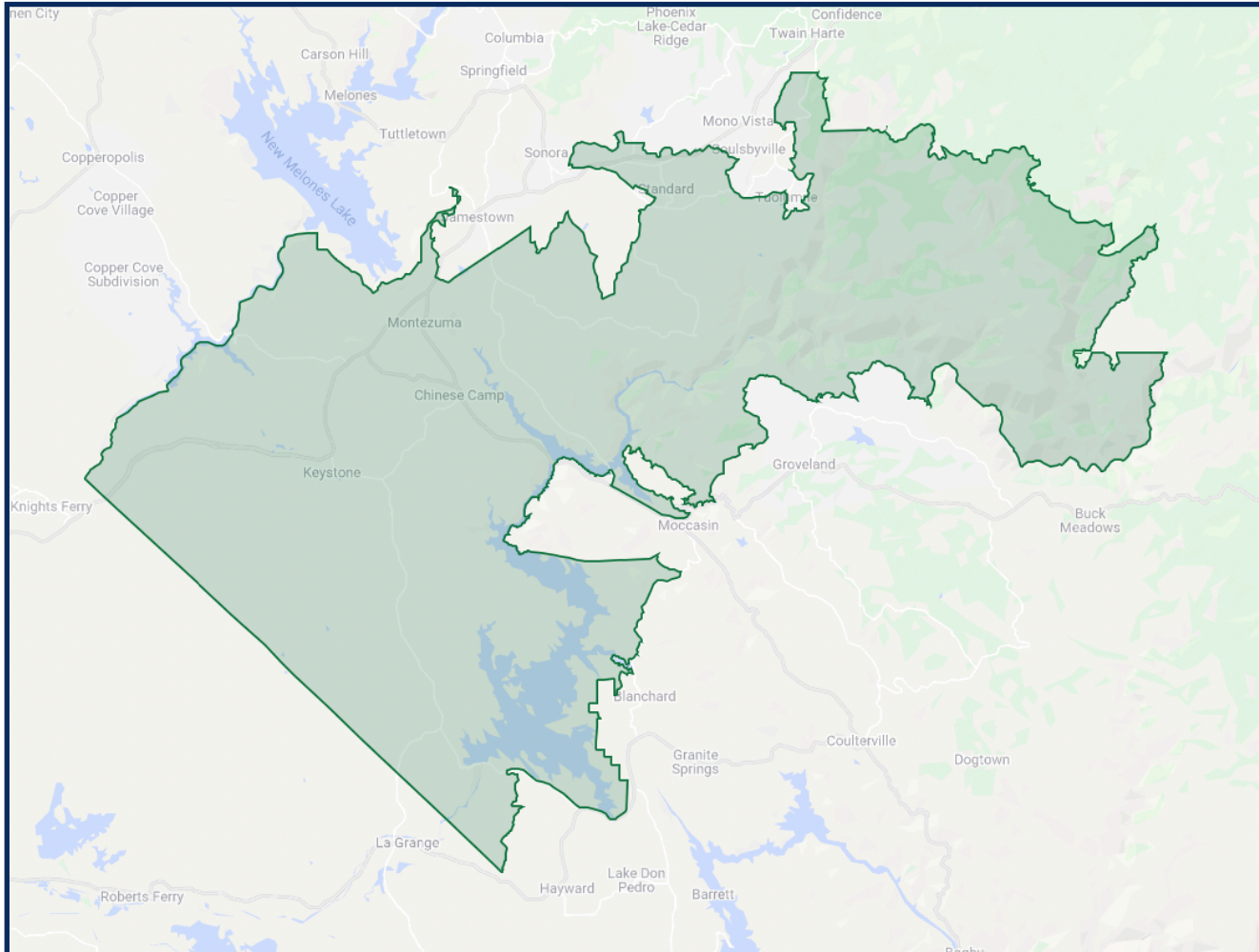
## DISTRICT 2



	2020 Count*	2019 CVAP*
Total	9,733	7,252
White	77.09%	84.05%
Black	0.41%	0.87%
Asian	2.69%	2.04%
Hispanic	12.04%	9.91%
Native American	1.08%	0.65%

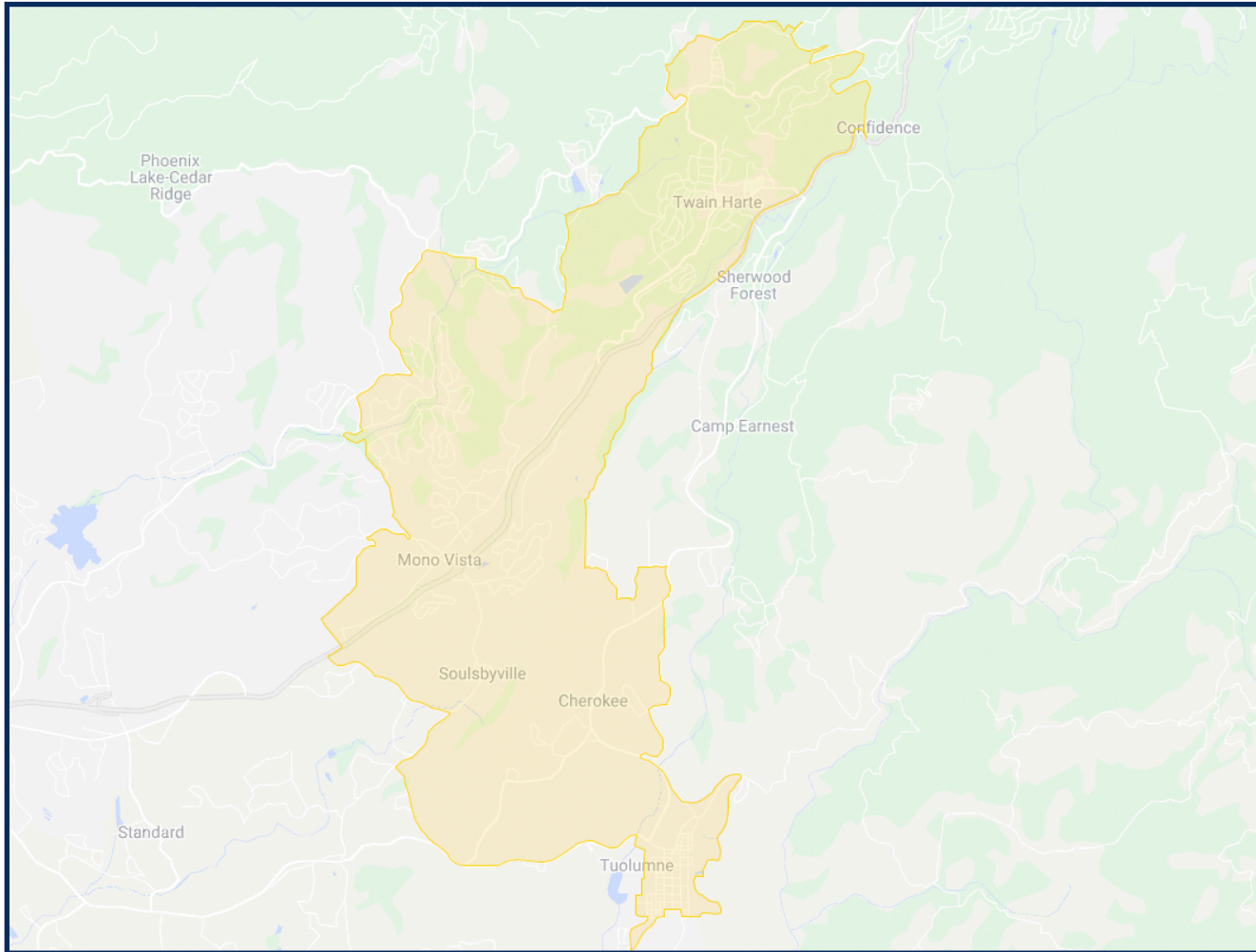
# DISTRICTING TUD DRAFT 2

## DISTRICT 3



	2020 Count*	2019 CVAP*
Total	9,234	7,487
White	80.25%	88.42%
Black	0.32%	0.76%
Asian	1.08%	0.32%
Hispanic	10.92%	7.96%
Native American	1.67%	1.70%

## DISTRICT 4

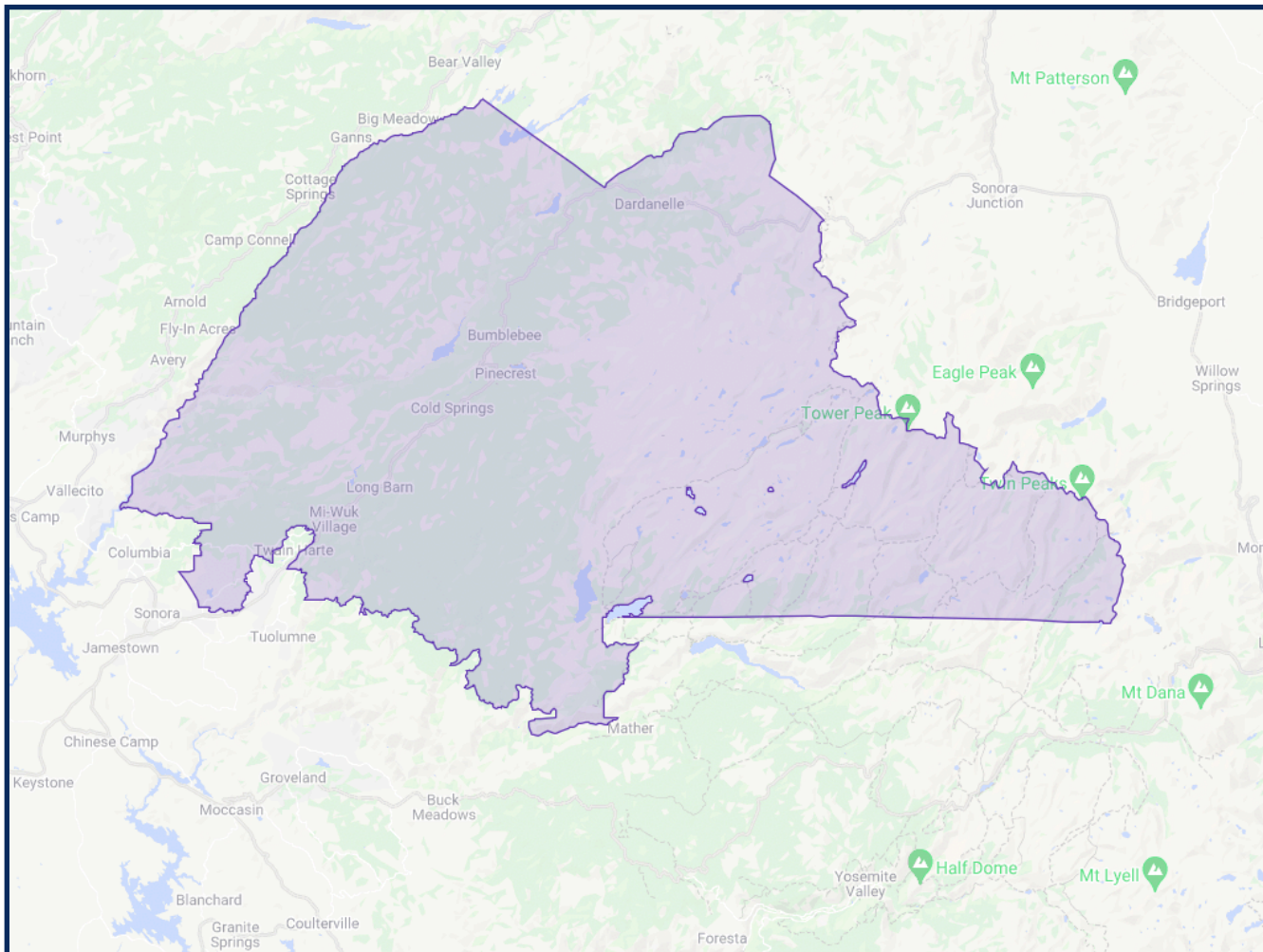


	2020 Count*	2019 CVAP*
Total	9,724	7,704
White	76.51%	82.41%
Black	0.33%	0.05%
Asian	0.85%	0.23%
Hispanic	12.39%	12.69%
Native American	2.19%	1.87%



# DISTRICTING TUD DRAFT 2

## DISTRICT 5



	2020 Count*	2019 CVAP*
Total	9,708	7,866
White	82.57%	88.98%
Black	0.20%	0.00%
Asian	0.75%	0.11%
Hispanic	8.68%	7.58%
Native American	1.01%	0.95%

# DISTRICTING TUD

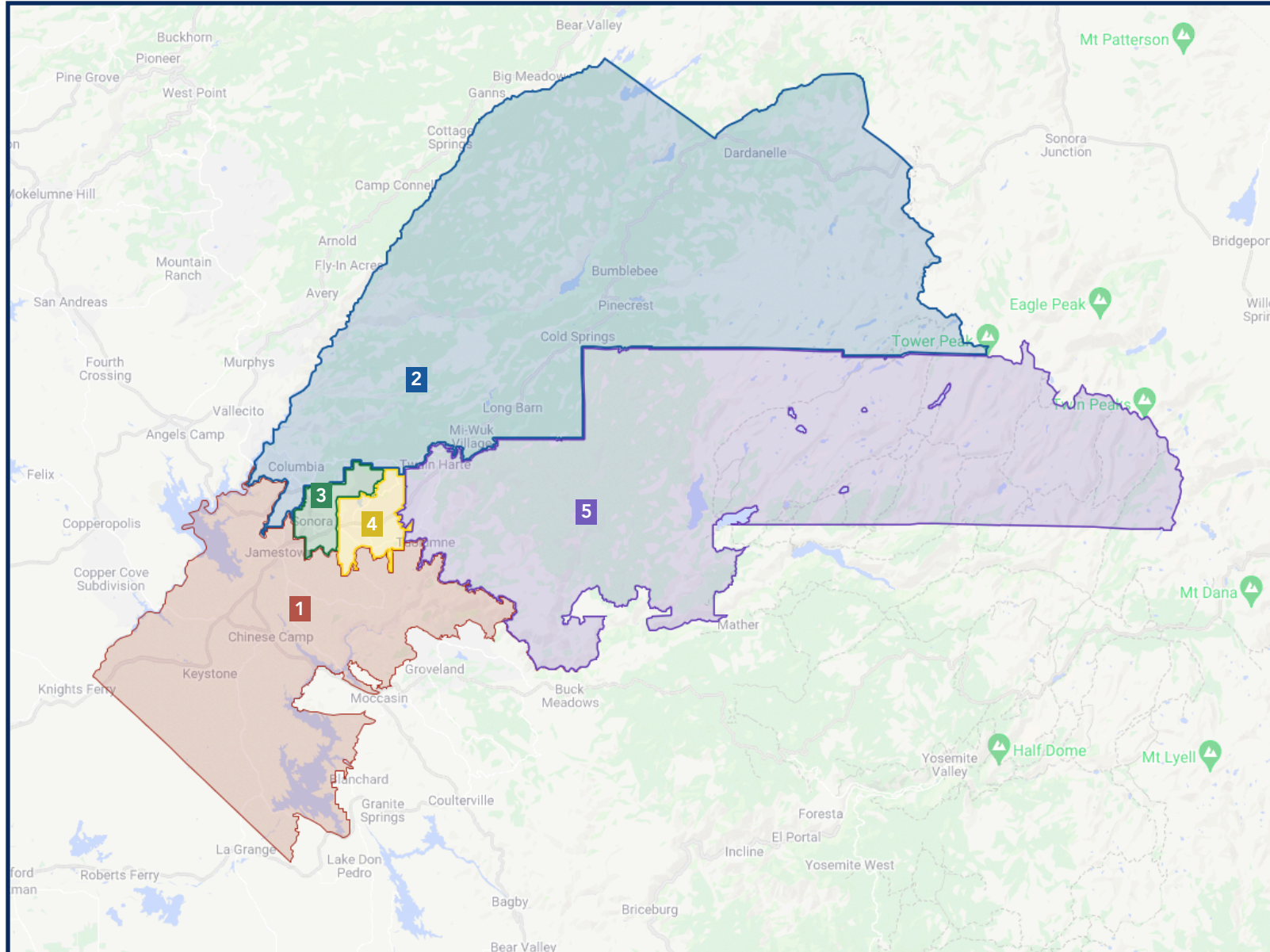
## DRAFT 3

	DISTRICT 1	DISTRICT 2	DISTRICT 3	DISTRICT 4	DISTRICT 5
2020 Census Count*	9,186	9,730	9,748	9,717	9,678
Deviation #	-426	118	136	105	66
Deviation %	-4.4%	1.2%	1.4%	1.1%	0.7%
2010 Census Count	12,926	9,497	9,245	9,490	9,549
2019 CVAP*	7,028	7,202	7,210	8,510	7,658
2010 CVAP	11,637	7,818	7,529	7,287	7,110



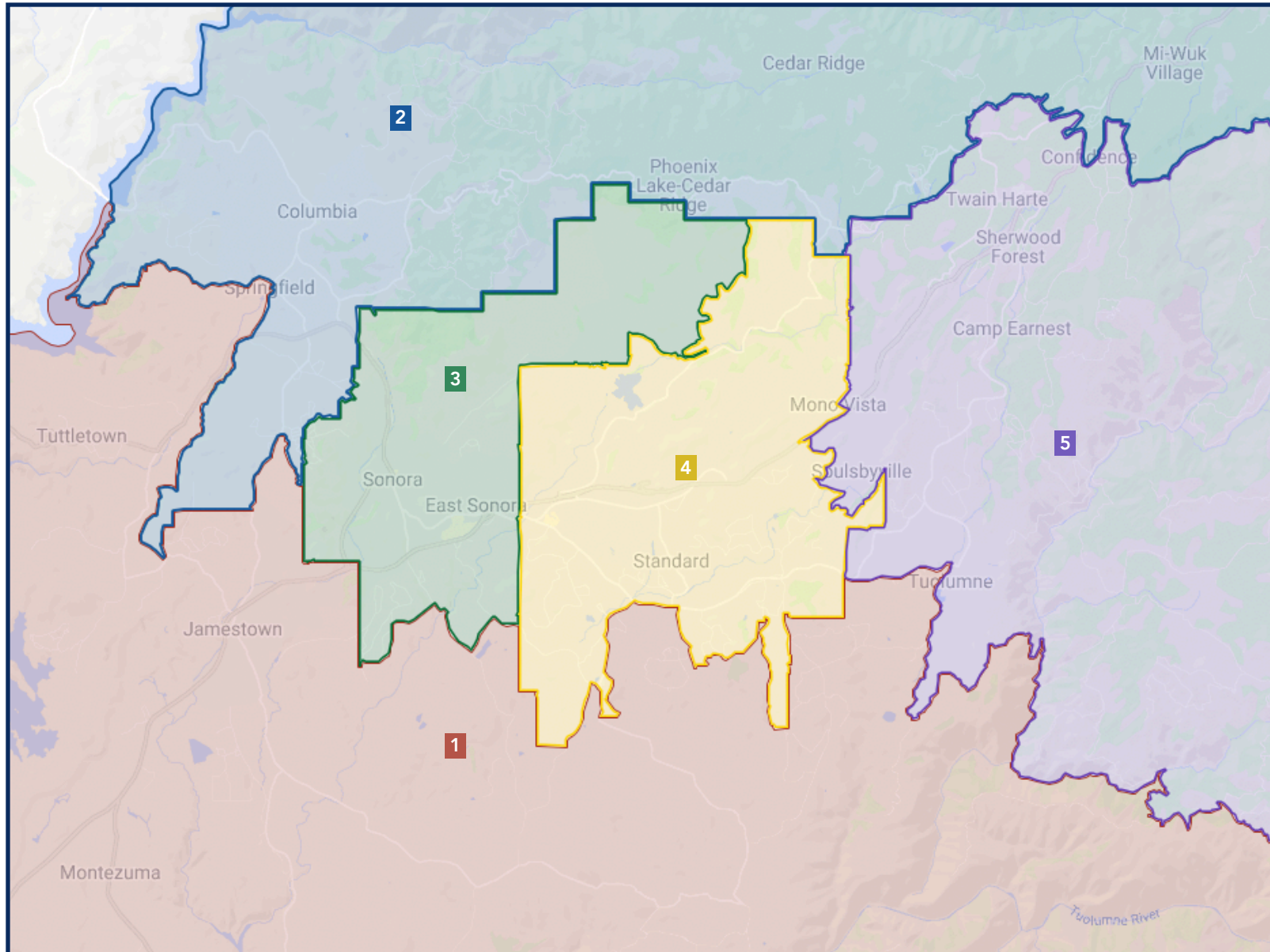
*\*Adjusted for prisoner reallocation*

# DISTRICTING TUD DRAFT 3



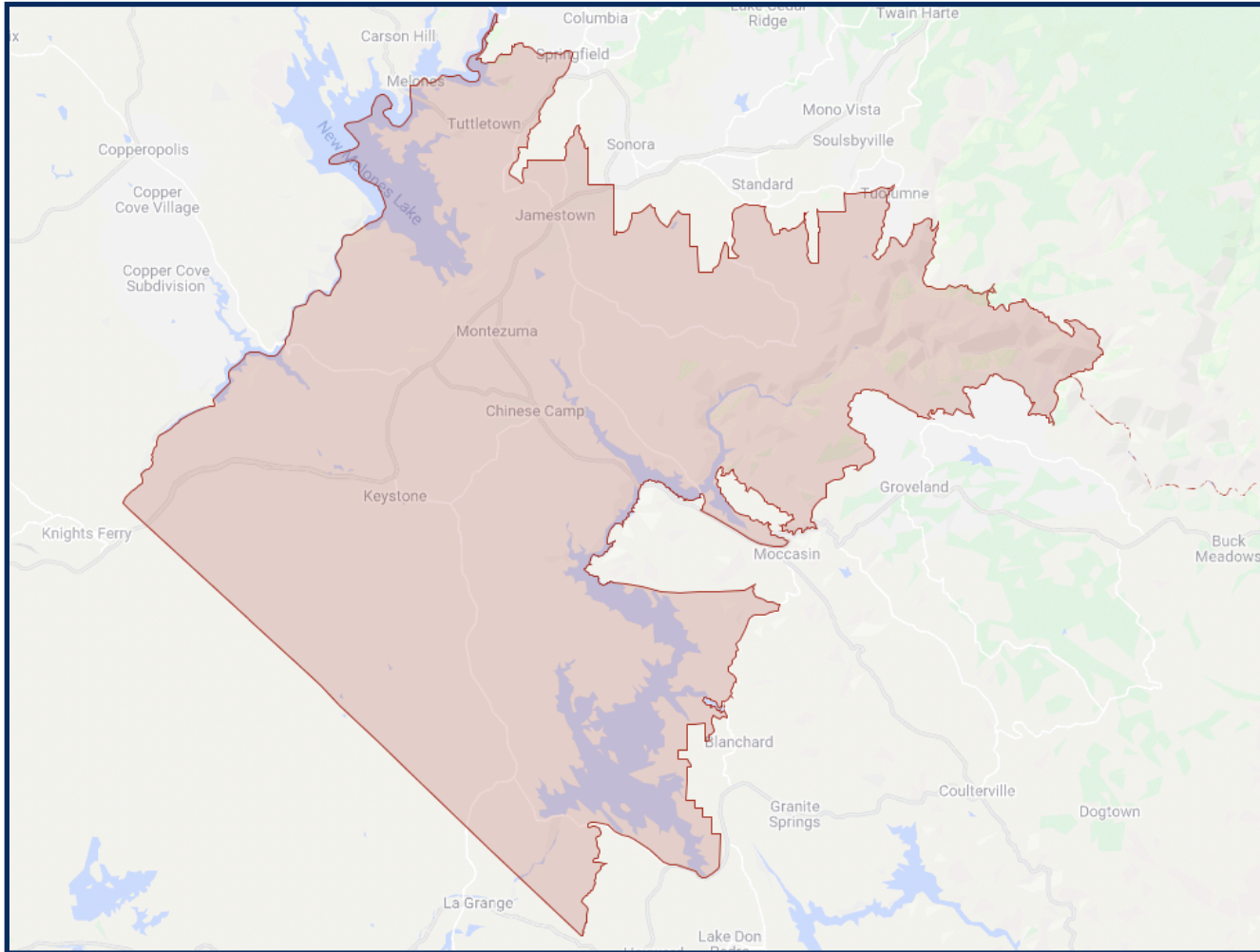
*\*Adjusted for prisoner reallocation*

# DISTRICTING TUD DRAFT 3



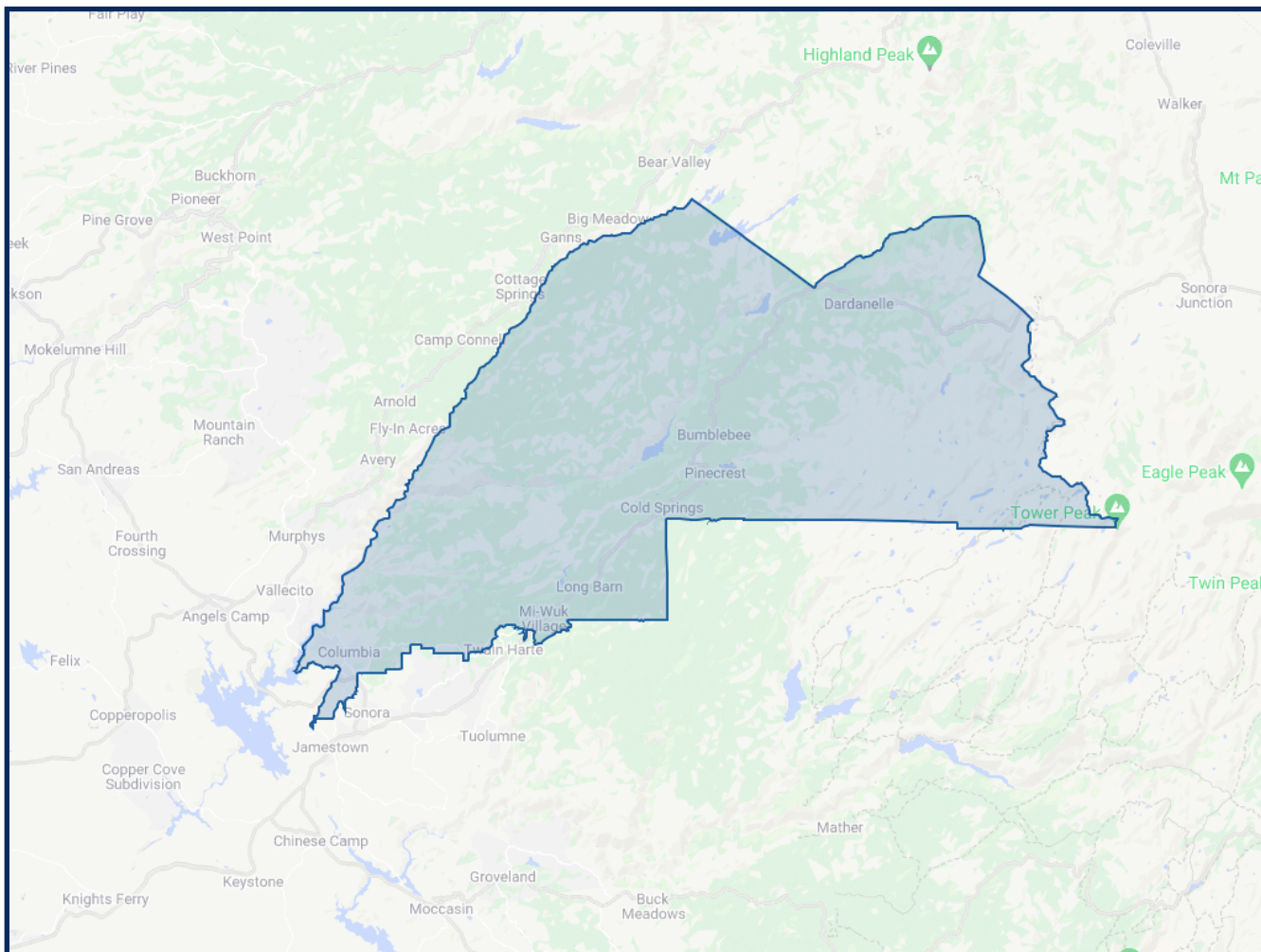
# DISTRICTING TUD DRAFT 3

## DISTRICT 1



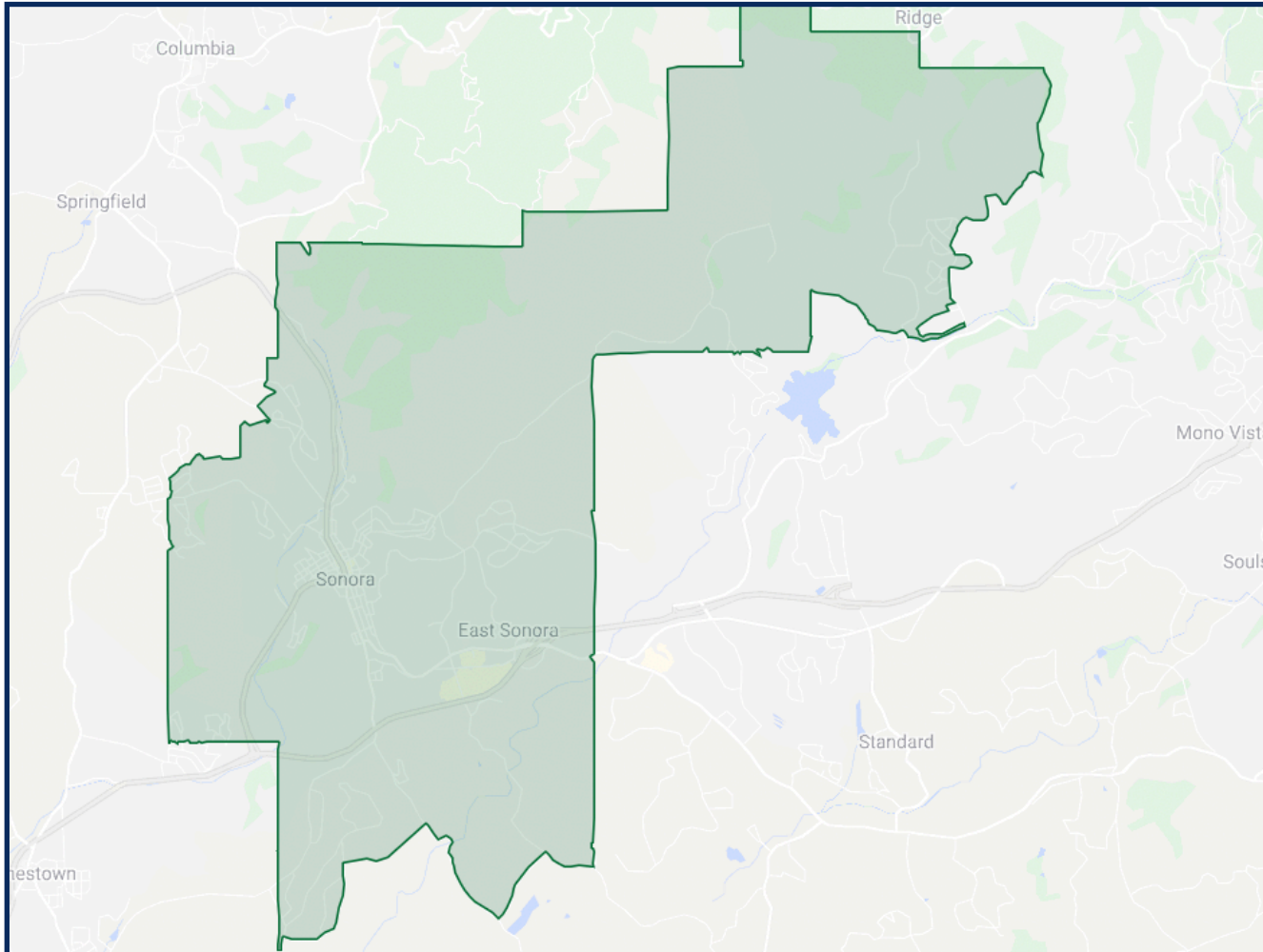
	2020 Count*	2019 CVAP*
Total	9,186	7,028
White	77.14%	88.76%
Black	0.56%	0.81%
Asian	1.13%	0.11%
Hispanic	12.81%	9.76%
Native American	1.70%	1.00%

## DISTRICT 2



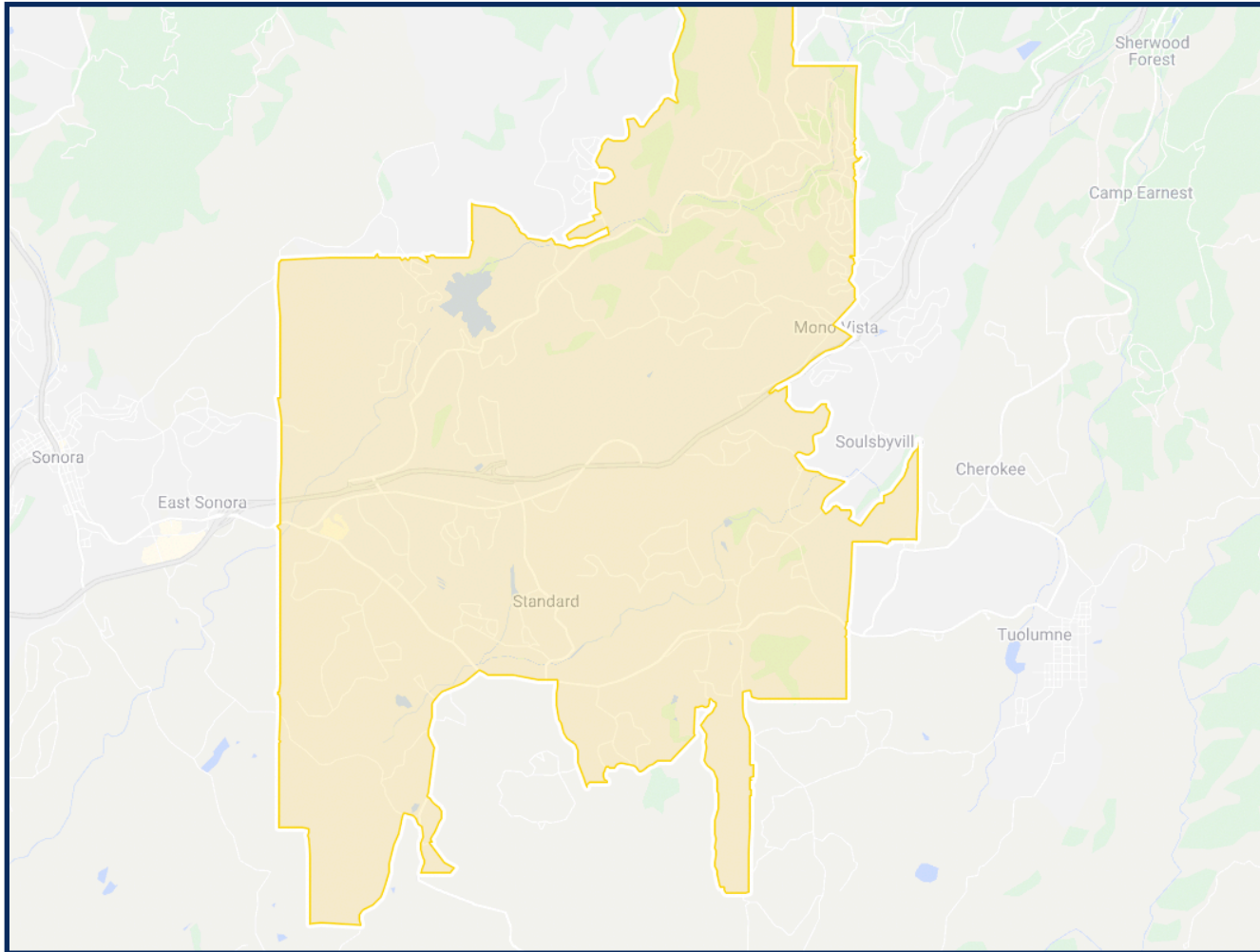
	2020 Count*	2019 CVAP*
Total	9,730	7,202
White	79.46%	85.75%
Black	0.25%	0.00%
Asian	1.15%	0.22%
Hispanic	10.61%	9.07%
Native American	1.16%	1.46%

## DISTRICT 3



	2020 Count*	2019 CVAP*
Total	9,748	7,210
White	78.09%	84.44%
Black	0.53%	0.86%
Asian	2.90%	1.96%
Hispanic	11.01%	9.74%
Native American	1.16%	1.04%

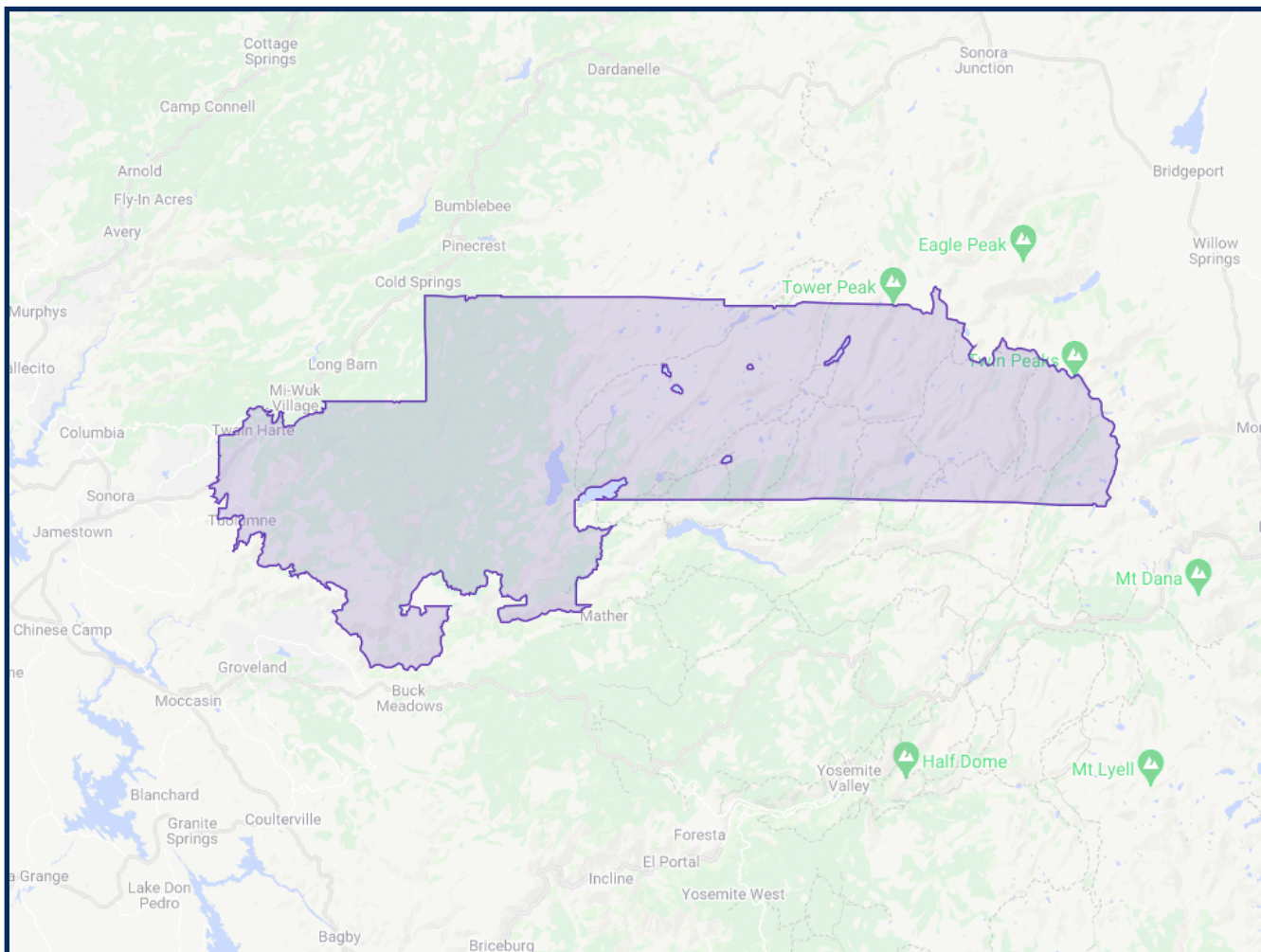
## DISTRICT 4



	2020 Count*	2019 CVAP*
Total	9,717	8,510
White	79.84%	86.89%
Black	0.29%	0.02%
Asian	0.80%	0.21%
Hispanic	11.30%	8.04%
Native American	0.99%	1.99%



## DISTRICT 5



	2020 Count*	2019 CVAP*
Total	9,678	7,658
White	78.63%	84.15%
Black	0.23%	0.05%
Asian	0.77%	0.35%
Hispanic	10.78%	11.62%
Native American	2.62%	1.63%

# DISTRICTING TUD

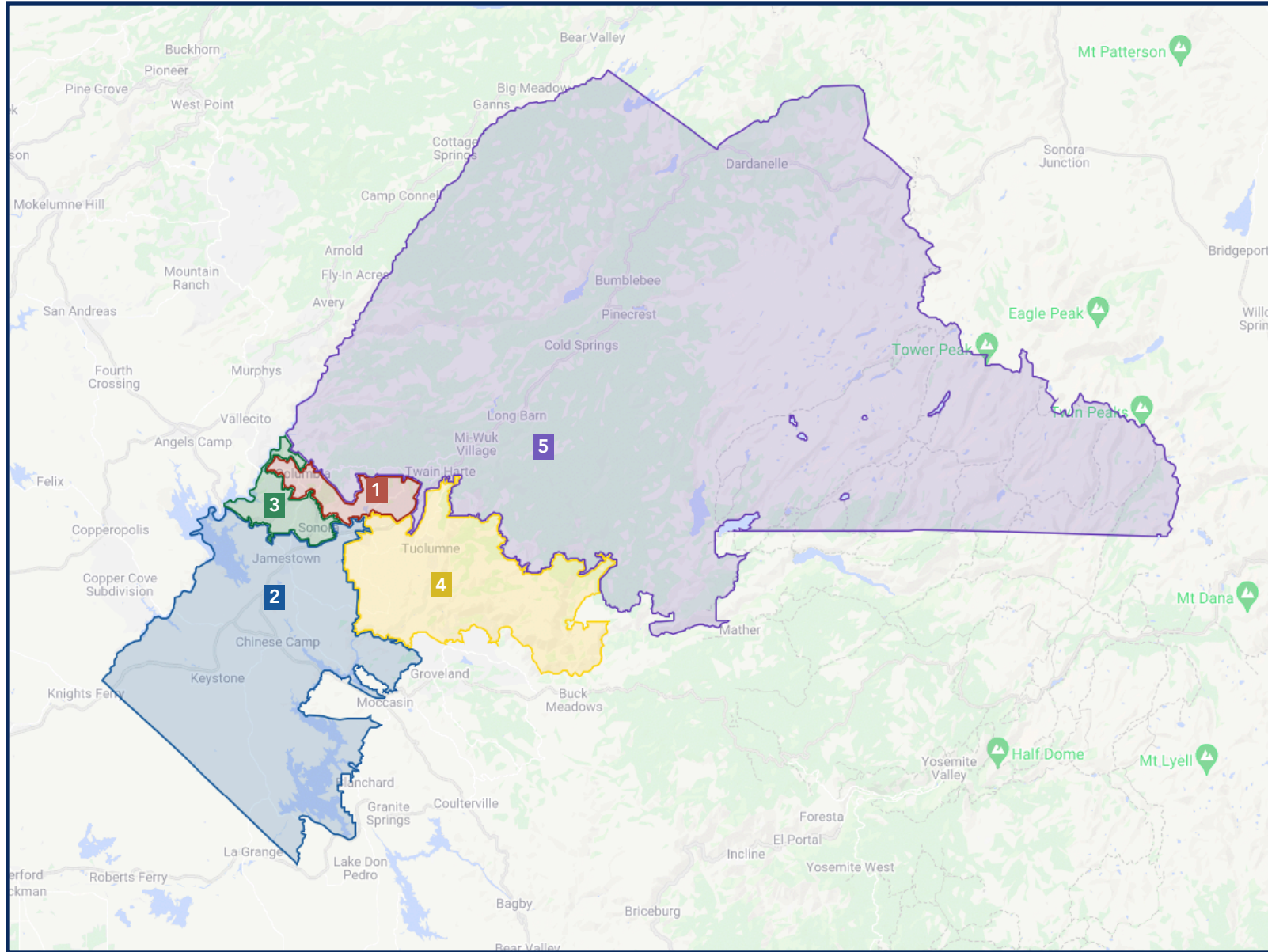
## DRAFT 4

	DISTRICT 1	DISTRICT 2	DISTRICT 3	DISTRICT 4	DISTRICT 5
2020 Census Count*	9,712	9,173	9,749	9,729	9,696
Deviation #	100	-439	137	117	84
Deviation %	1.0%	-4.6%	1.4%	1.2%	0.9%
2010 Census Count	9,175	12,857	9,118	9,639	9,918
2019 CVAP*	7,976	6,962	7,089	8,121	7,460
2010 CVAP	7,032	11,346	7,459	7,563	7,981



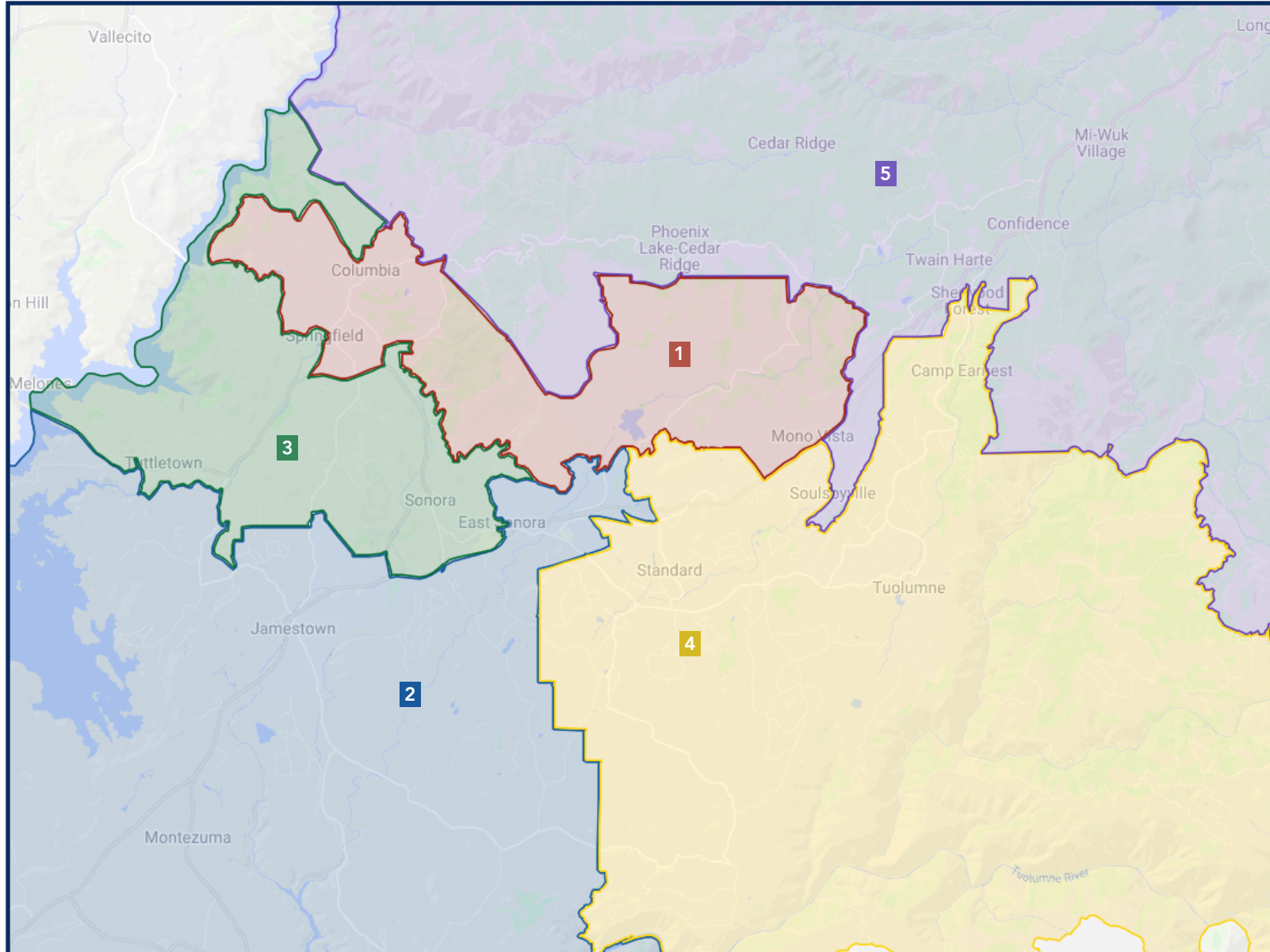
\*Adjusted for prisoner reallocation

# DISTRICTING TUD DRAFT 4

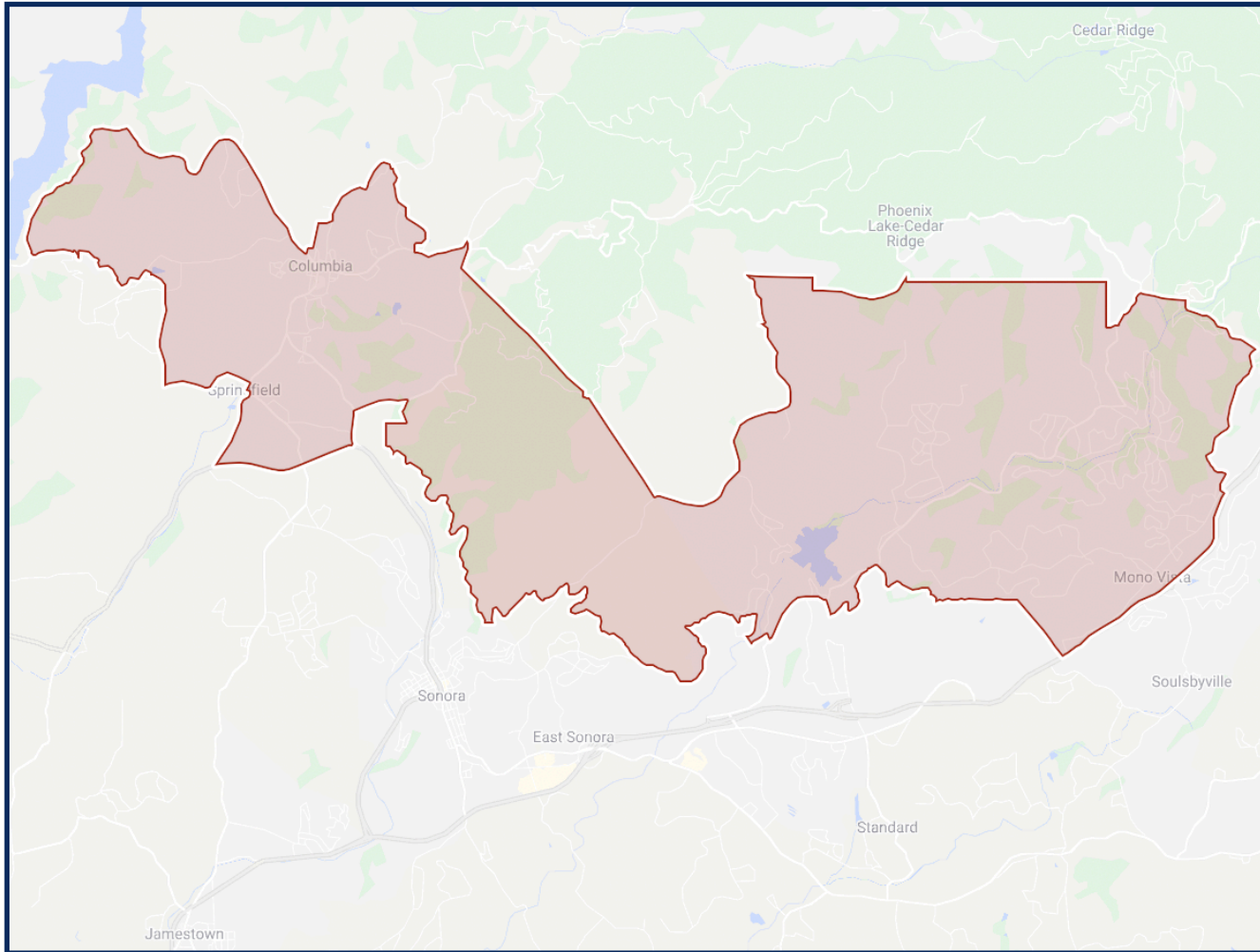


*\*Adjusted for prisoner reallocation*

# DISTRICTING TUD DRAFT 4

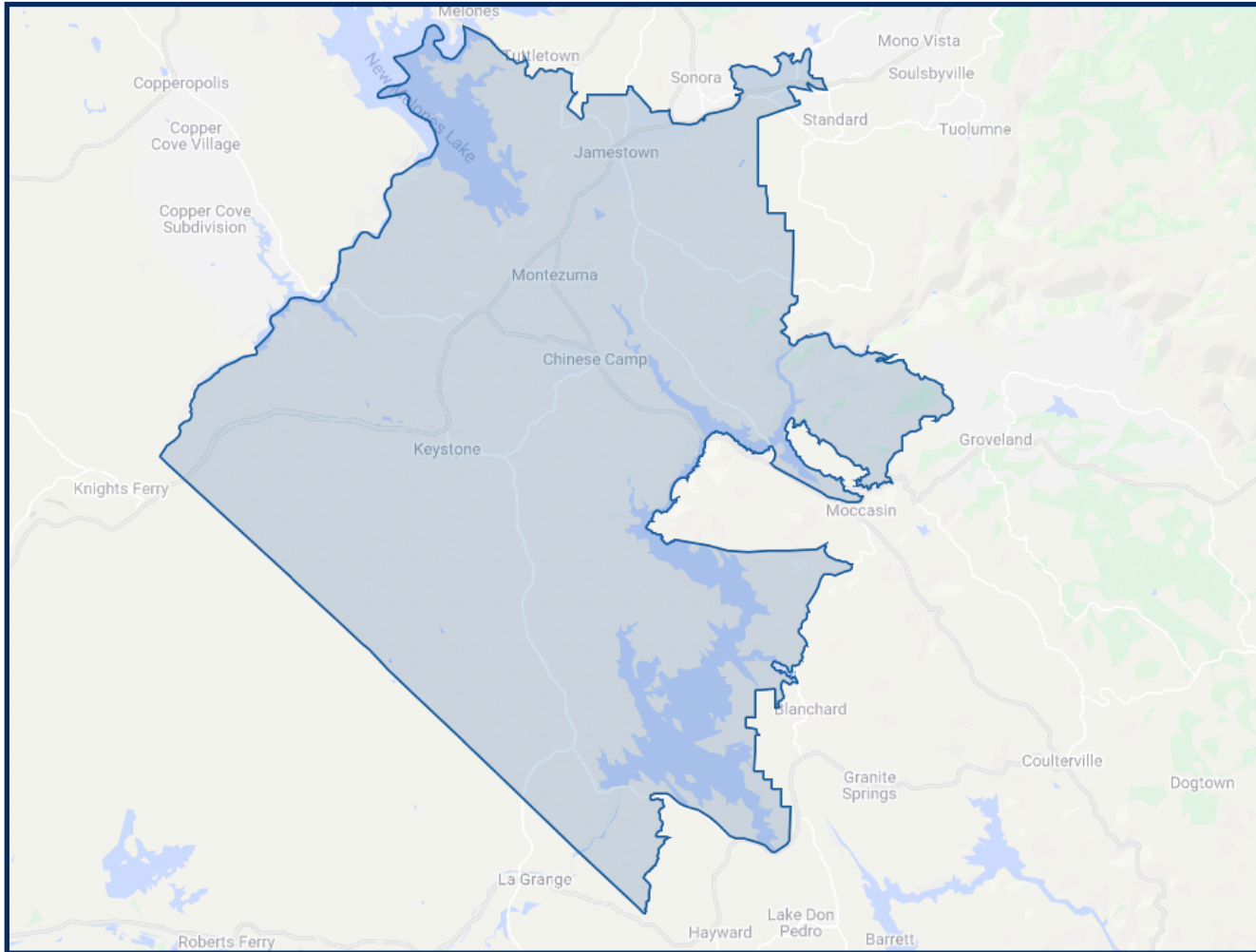


# DISTRICT 1



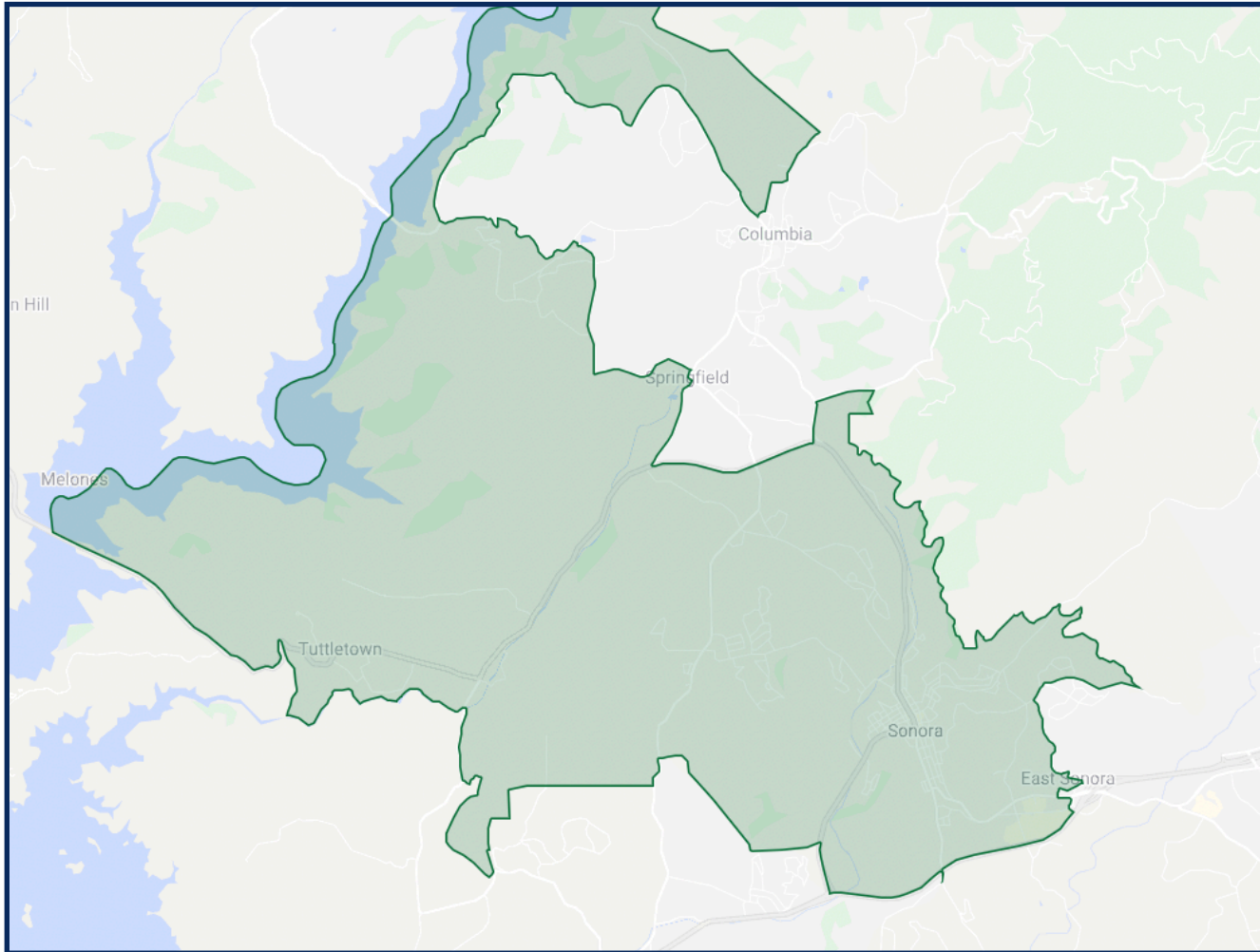
	2020 Count*	2019 CVAP*
Total	9,712	7,976
White	78.31%	88.44%
Black	0.37%	0.01%
Asian	1.18%	0.19%
Hispanic	11.67%	7.72%
Native American	1.19%	0.16%

## DISTRICT 2



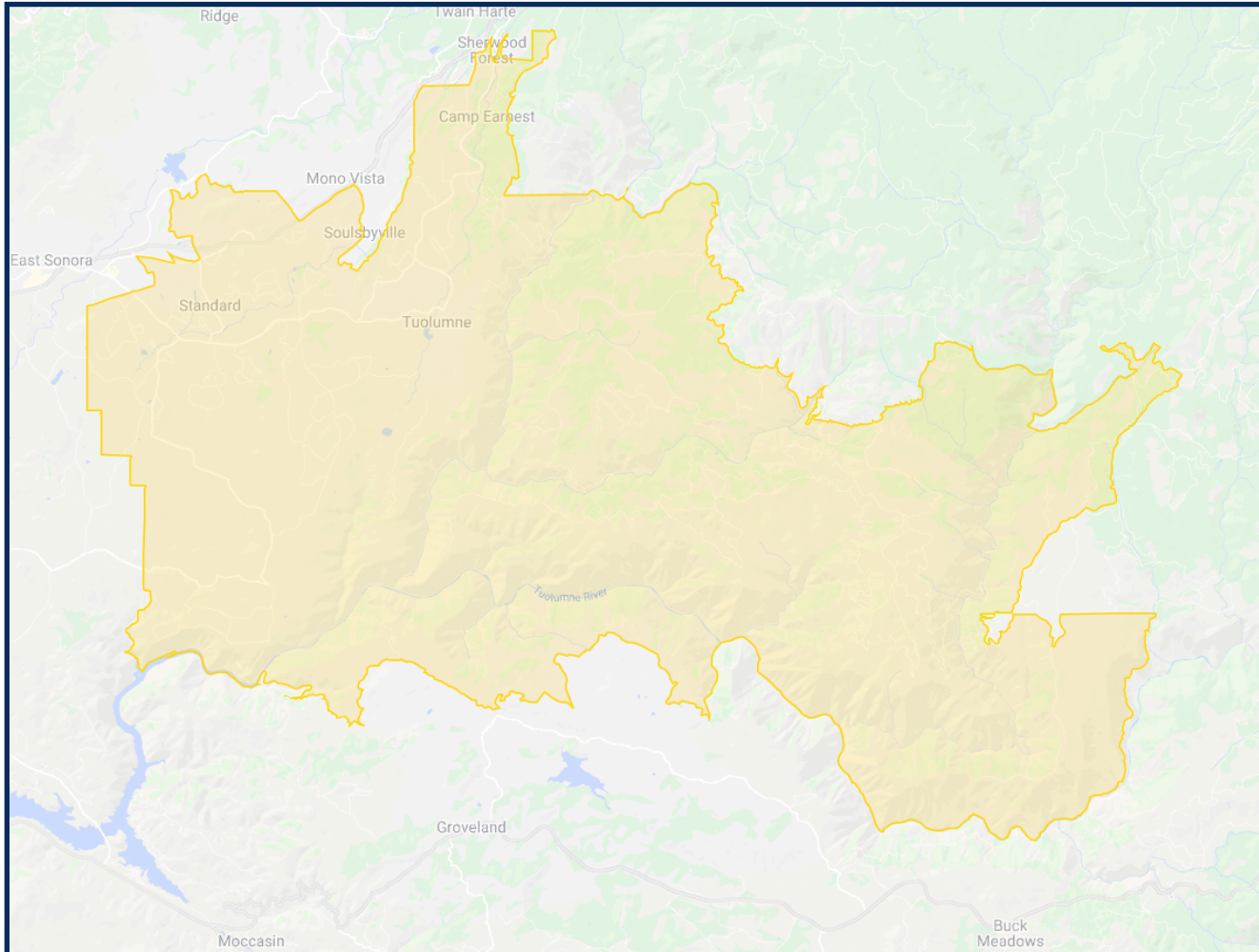
	2020 Count*	2019 CVAP*
Total	9,173	6,962
White	76.90%	87.52%
Black	0.59%	0.82%
Asian	1.64%	0.09%
Hispanic	12.72%	10.24%
Native American	1.47%	1.01%

### DISTRICT 3



	2020 Count*	2019 CVAP*
Total	9,749	7,089
White	76.86%	83.47%
Black	0.53%	0.87%
Asian	2.46%	1.93%
Hispanic	12.11%	10.88%
Native American	1.16%	0.68%

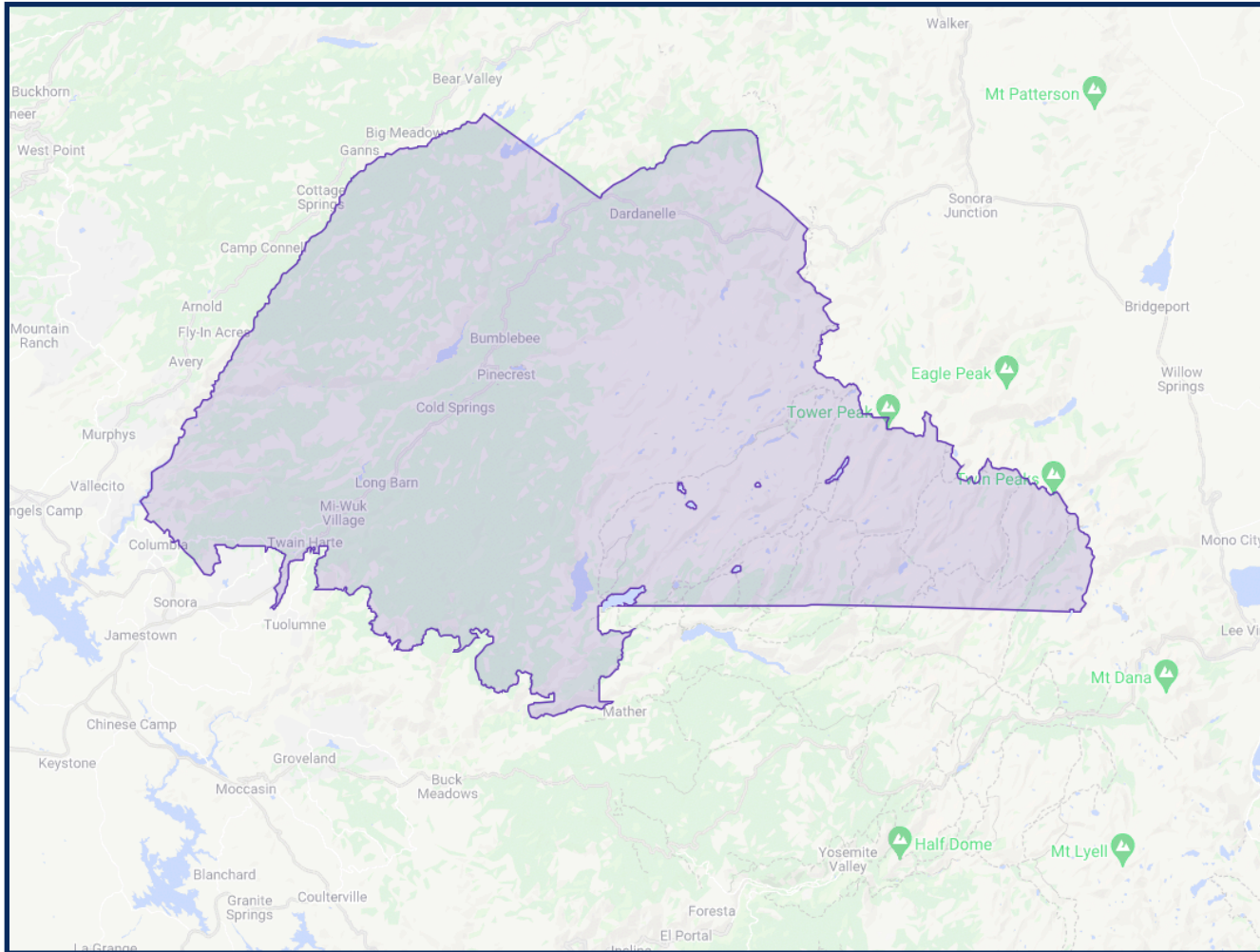
## DISTRICT 4



	2020 Count*	2019 CVAP*
Total	9,729	8,121
White	79.78%	85.20%
Black	0.11%	0.05%
Asian	0.71%	0.57%
Hispanic	10.39%	8.87%
Native American	2.81%	3.30%



## DISTRICT 5



	2020 Count*	2019 CVAP*
Total	9,696	7,460
White	81.30%	85.21%
Black	0.25%	0.01%
Asian	0.80%	0.08%
Hispanic	9.60%	10.66%
Native American	0.98%	1.94%

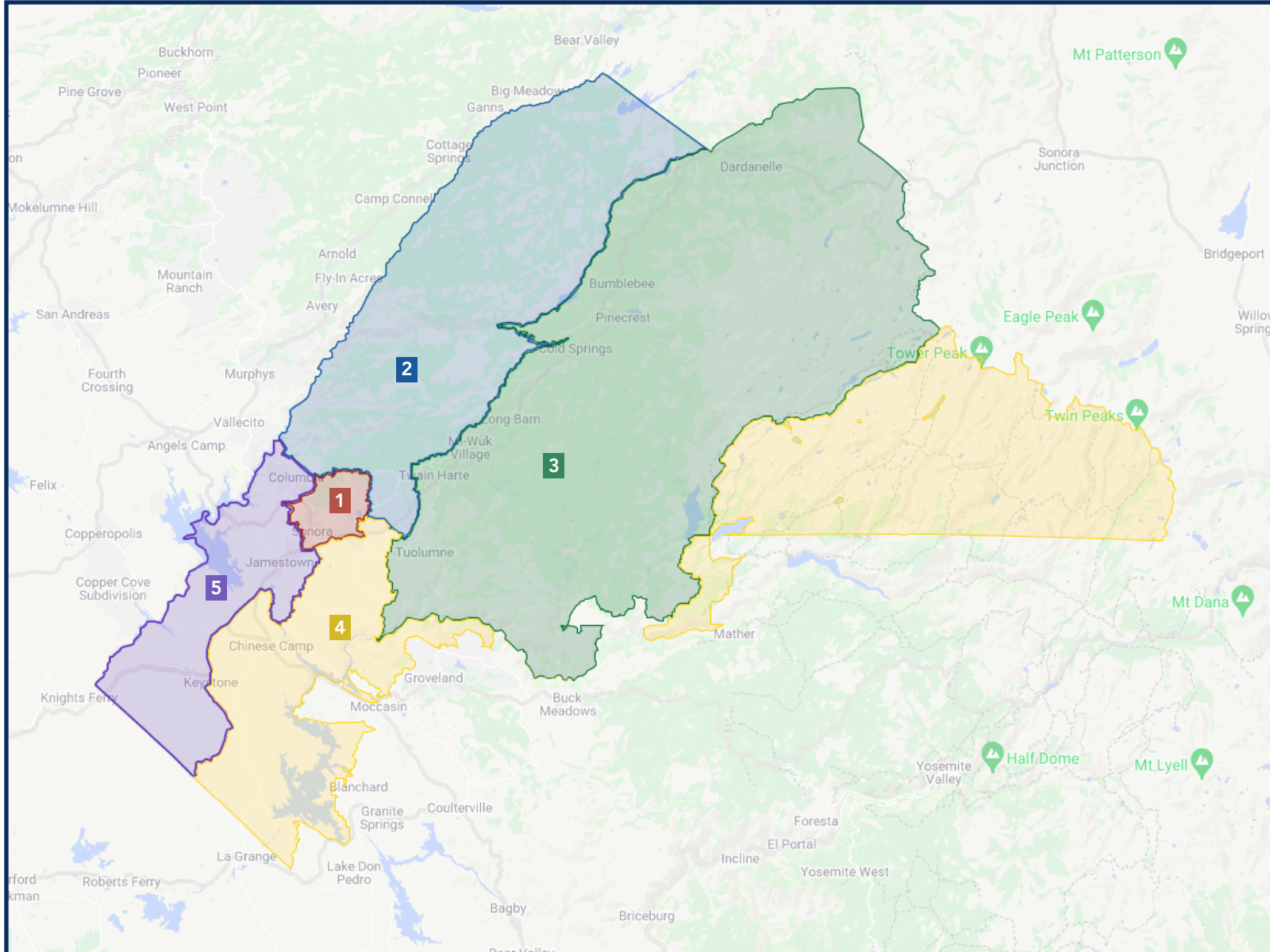
# DISTRICTING TUD DRAFT 5 (SUPERVISORS)

	DISTRICT 1	DISTRICT 2	DISTRICT 3	DISTRICT 4	DISTRICT 5
2020 Census Count*	10,894	10,152	10,514	5,493	11,006
Deviation #	1,282	540	902	-4,119	1,394
Deviation %	13.3%	5.6%	9.4%	-42.9%	14.5%
2010 Census Count	10,231	10,099	10,565	5,659	14,153
2019 CVAP*	7,925	8,335	8,231	4,724	8,393
2010 CVAP	7,848	7,734	8,300	6,579	10,919



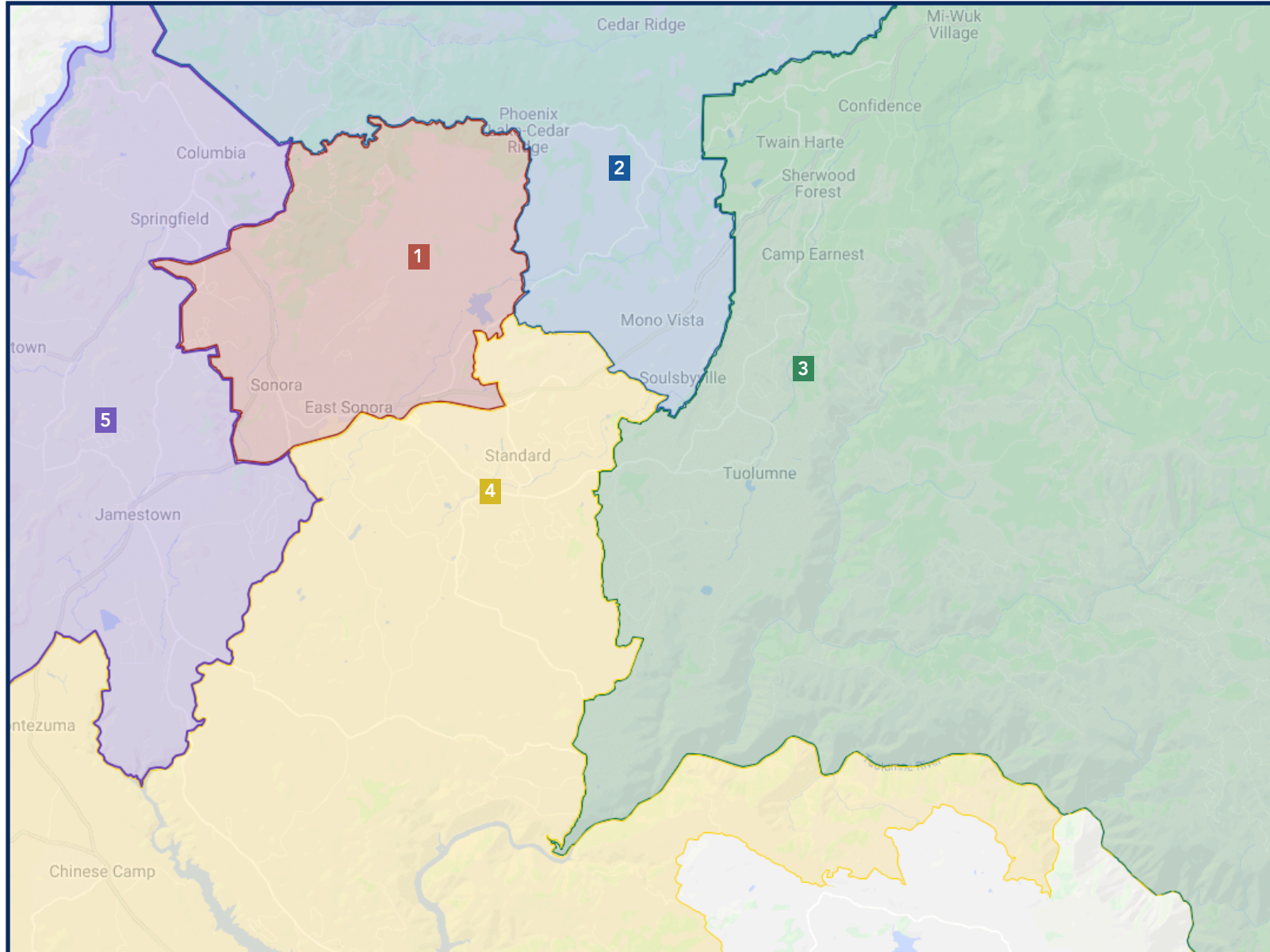
\*Adjusted for prisoner reallocation

# DISTRICTING TUD DRAFT 5 (SUPERVISORS)



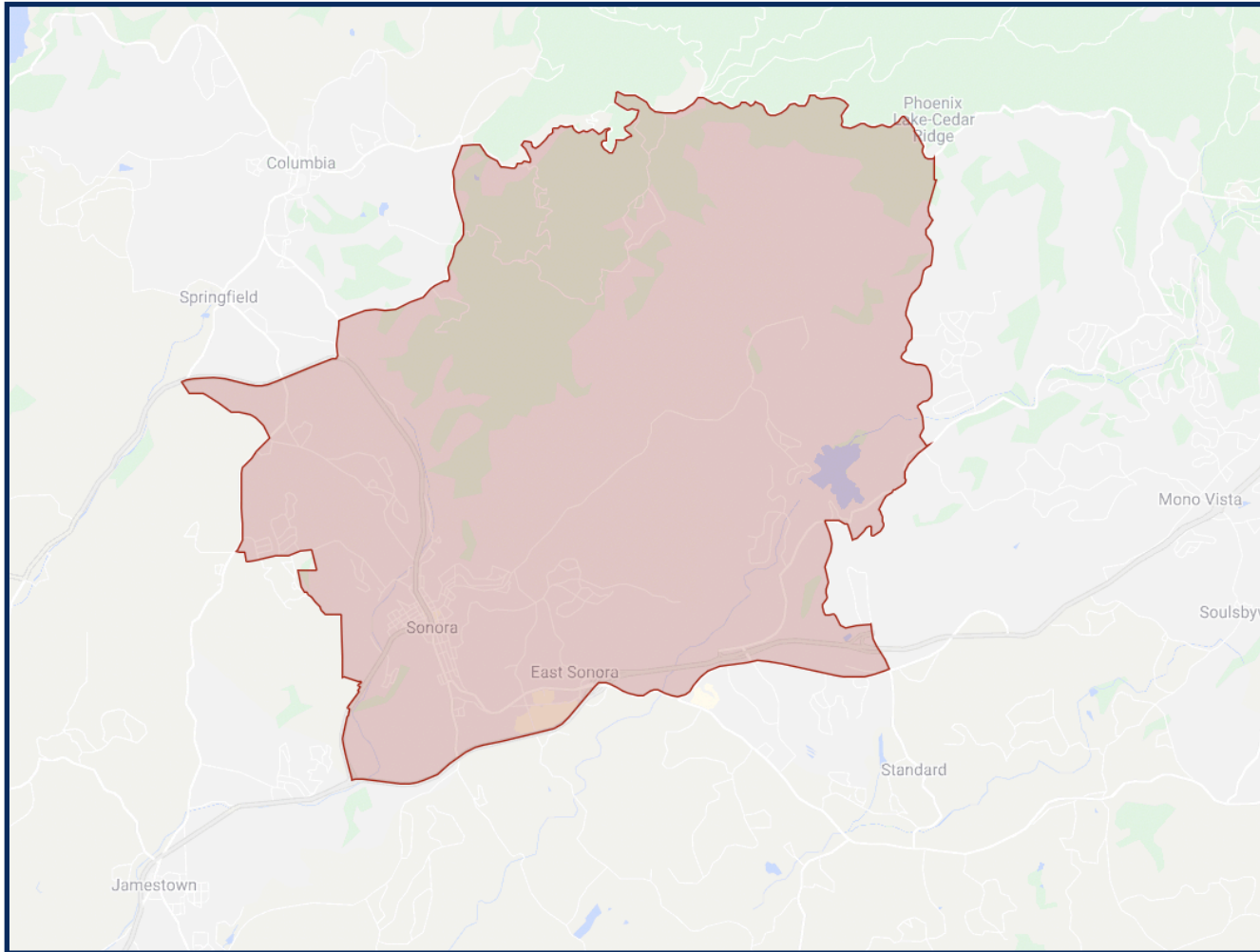
*\*Adjusted for prisoner reallocation*

# DISTRICTING TUD DRAFT 5 (SUPERVISORS)



# DISTRICTING TUD DRAFT 5 (SUPERVISORS)

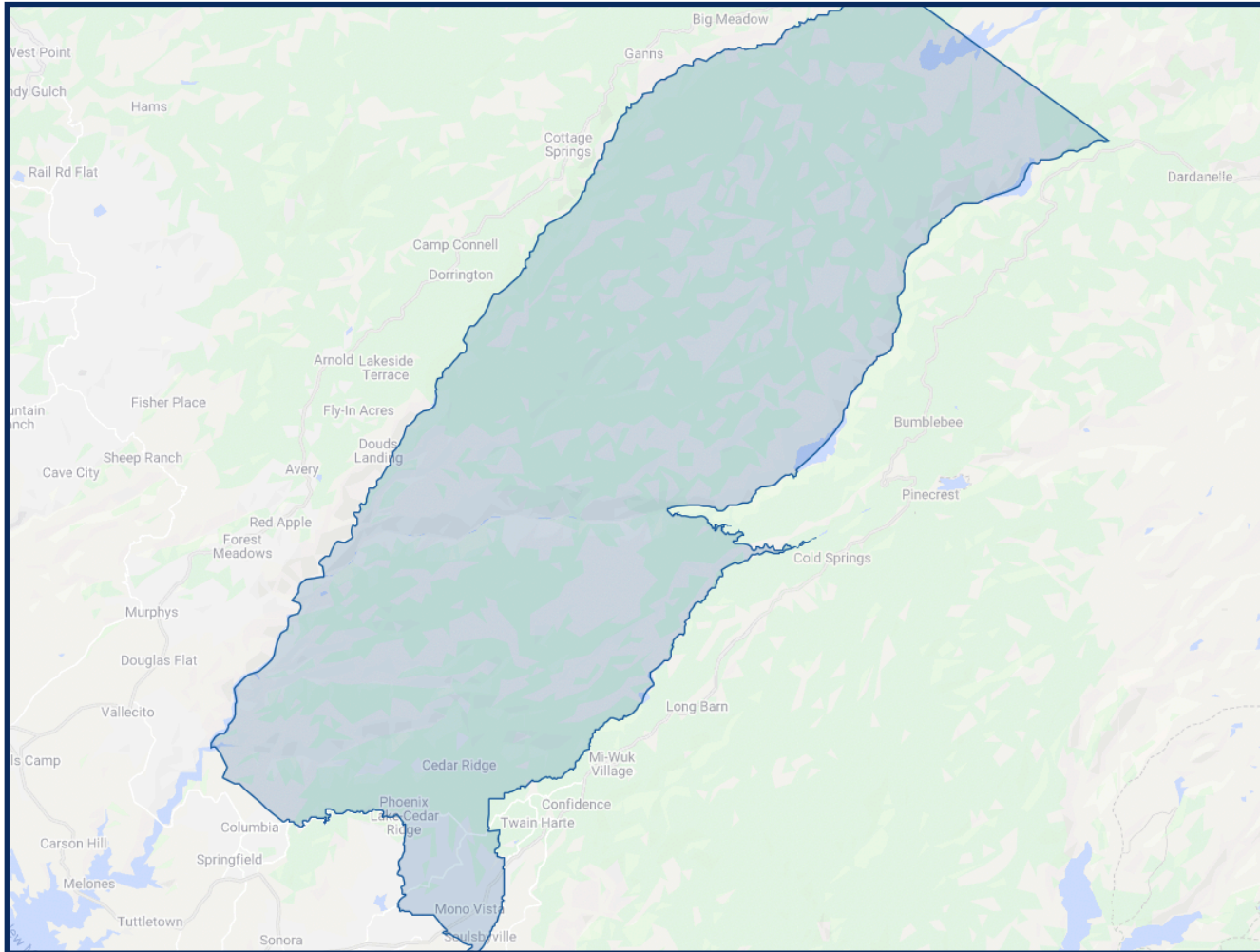
## DISTRICT 1



	2020 Count*	2019 CVAP*
Total	10,894	7,925
White	77.58%	83.50%
Black	0.53%	0.78%
Asian	2.61%	1.74%
Hispanic	11.45%	9.72%
Native American	1.13%	1.44%

# DISTRICTING TUD DRAFT 5 (SUPERVISORS)

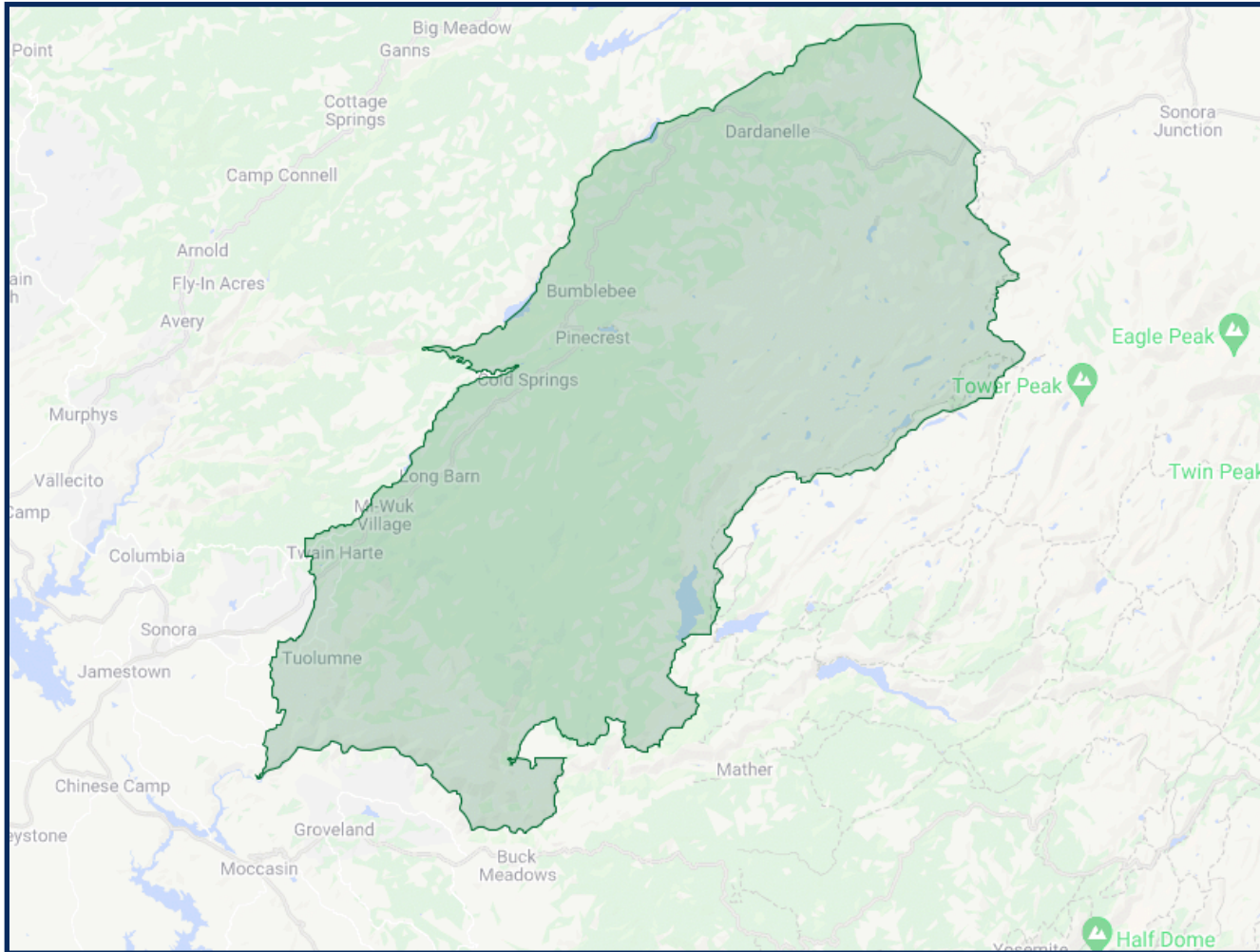
## DISTRICT 2



	2020 Count*	2019 CVAP*
Total	10,152	8,335
White	79.11%	84.82%
Black	0.33%	0.02%
Asian	0.77%	0.14%
Hispanic	11.32%	9.95%
Native American	1.15%	1.31%

# DISTRICTING TUD DRAFT 5 (SUPERVISORS)

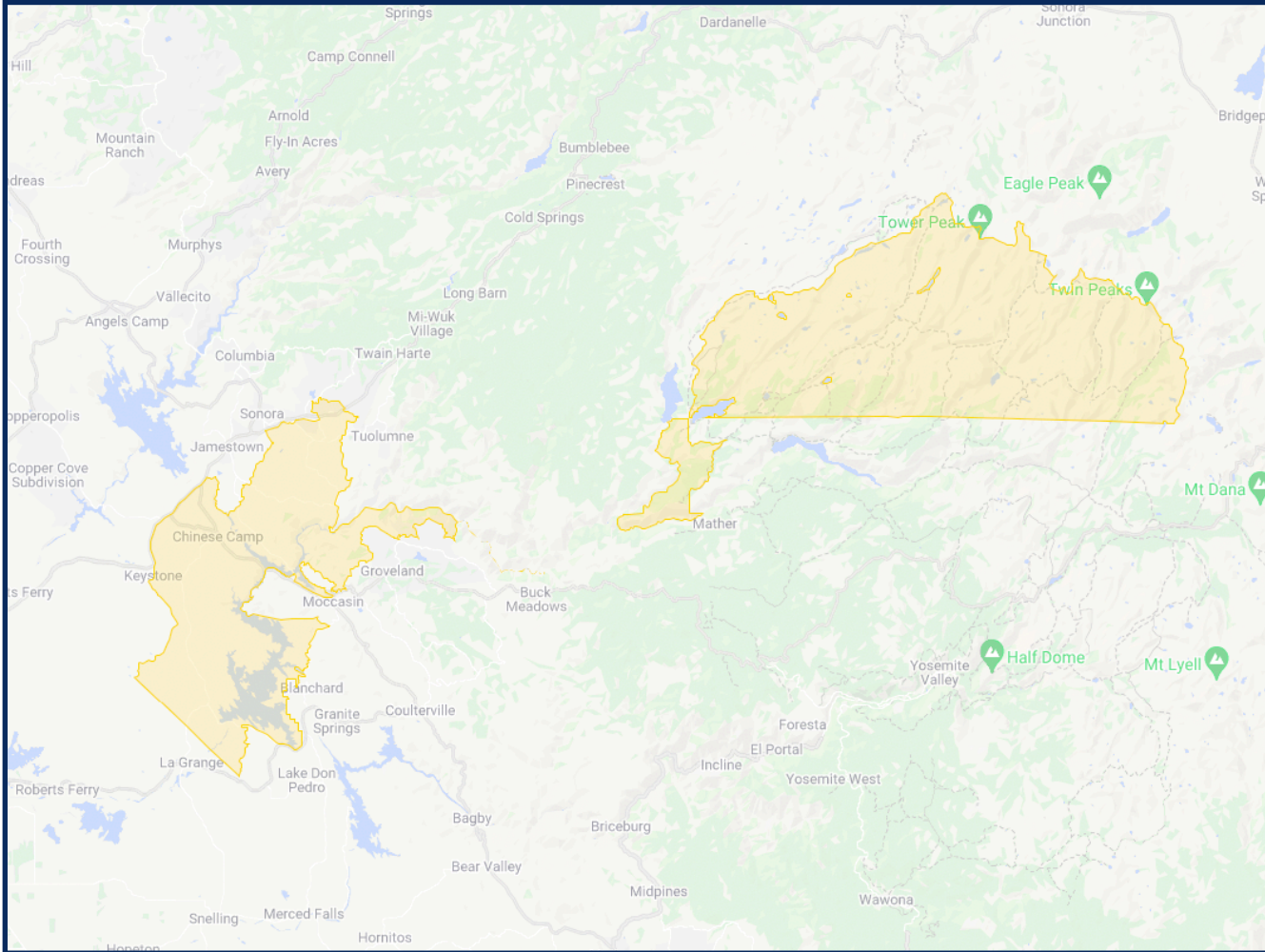
## DISTRICT 3



	2020 Count*	2019 CVAP*
Total	10,514	8,231
White	79.88%	86.75%
Black	0.14%	0.04%
Asian	0.74%	0.32%
Hispanic	9.79%	9.68%
Native American	2.54%	1.39%

# DISTRICTING TUD DRAFT 5 (SUPERVISORS)

## DISTRICT 4



	2020 Count*	2019 CVAP*
Total	5,493	4,724
White	81.72%	88.23%
Black	0.25%	1.21%
Asian	0.84%	0.40%
Hispanic	10.69%	7.15%
Native American	0.95%	2.12%

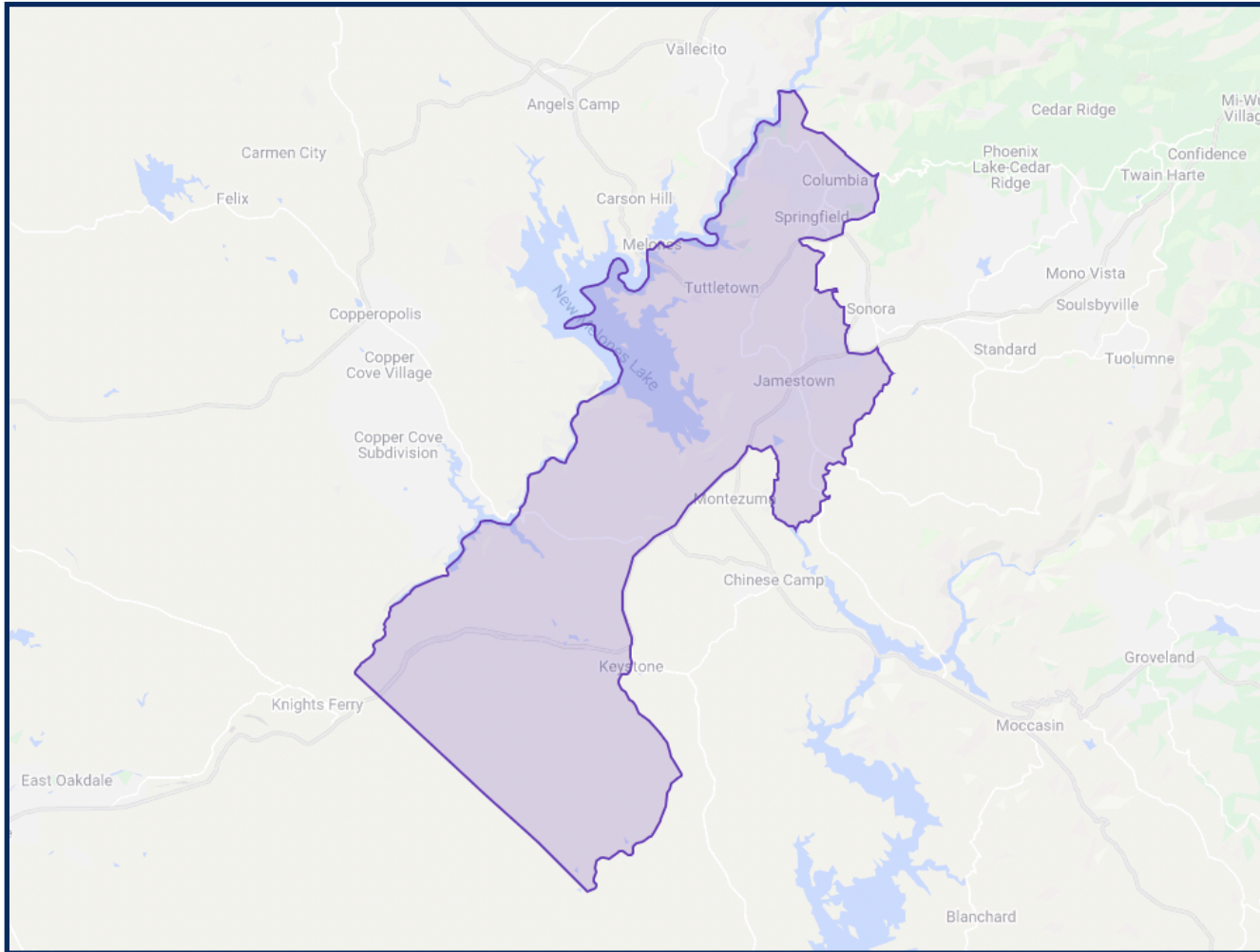


\*Adjusted for prisoner reallocation



# DISTRICTING TUD DRAFT 5 (SUPERVISORS)

## DISTRICT 5



	2020 Count*	2019 CVAP*
Total	11,006	8,393
White	76.56%	87.51%
Black	0.51%	0.01%
Asian	1.51%	0.18%
Hispanic	12.82%	10.50%
Native American	1.57%	1.27%



\*Adjusted for prisoner reallocation